

Owner Manual with Parts List

BOLENS

TYPE 6218-02

ROTARY MOWER

SAFETY RULES

NEVER turn cutting blade without first removing the spark plug connector from spark plug. NEVER stand in front of mower when starting. NEVER place hands or feet under mower while engine is running or stopped. NEVER fill gas tank while engine is running.

ASSEMBLY INSTRUCTIONS

The complete mower is shipped from the factory in one carton with the upper and lower handles located in the bottom of the carton. The hardware items for assembly of the handles and perforated leaf mulcher plate are located in the manual envelope. After removing mower base and handles from the carton, assemble the upper handle to lower handle using the cap screws and self locking nuts. Press the lower arms of handle inward and hook holes into handle bracket pins.

NOTE

The perforated mulcher plate should only be used when mulching leaves.

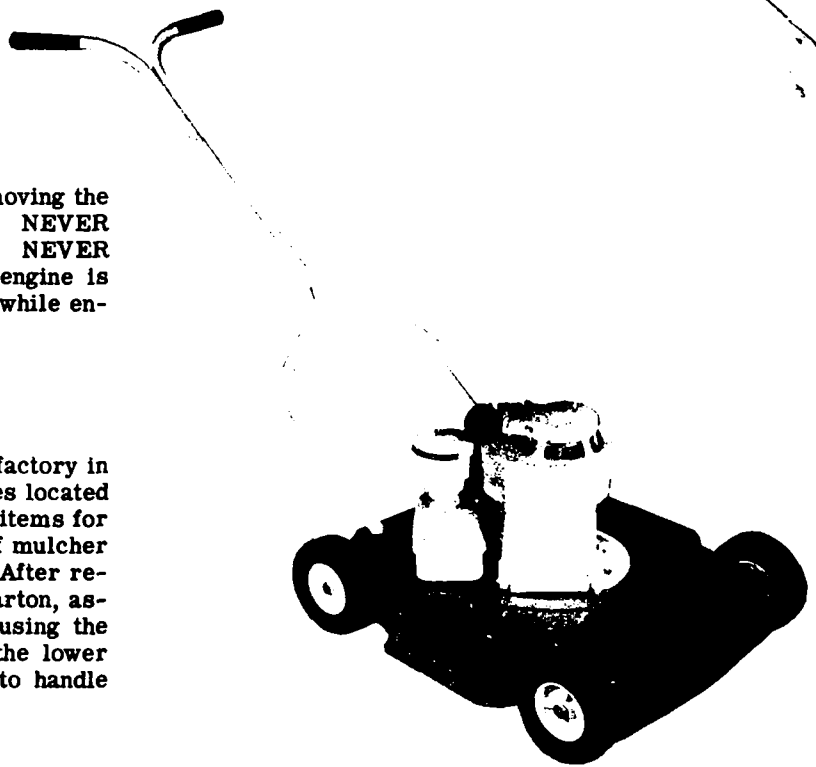
ENGINE

Complete instructions for the care and operation of the engine are contained in a separate manual by the engine manufacturer which is enclosed with this mower. Long life and faithful service from the mower will be assured by following these instructions. "READ INSTRUCTIONS CAREFULLY BEFORE STARTING ENGINE." DO NOT ATTEMPT TO START ENGINE IN GRASS. MOVE UNIT TO SIDEWALK OR OTHER FLAT SURFACE.

CUTTING HEIGHT ADJUSTMENT

The cutting height of the mower can be adjusted from 1-1/4 to 2-1/4 inches. The various cutting heights shown in the chart below can be attained by locating the wheels in various holes in the base. The mower is factory adjusted to a cutting height of 1-3/4 inches.

Upper hole	1-1/4 inches
Middle hole	1-3/4 inches
Bottom hole	2-1/4 inches

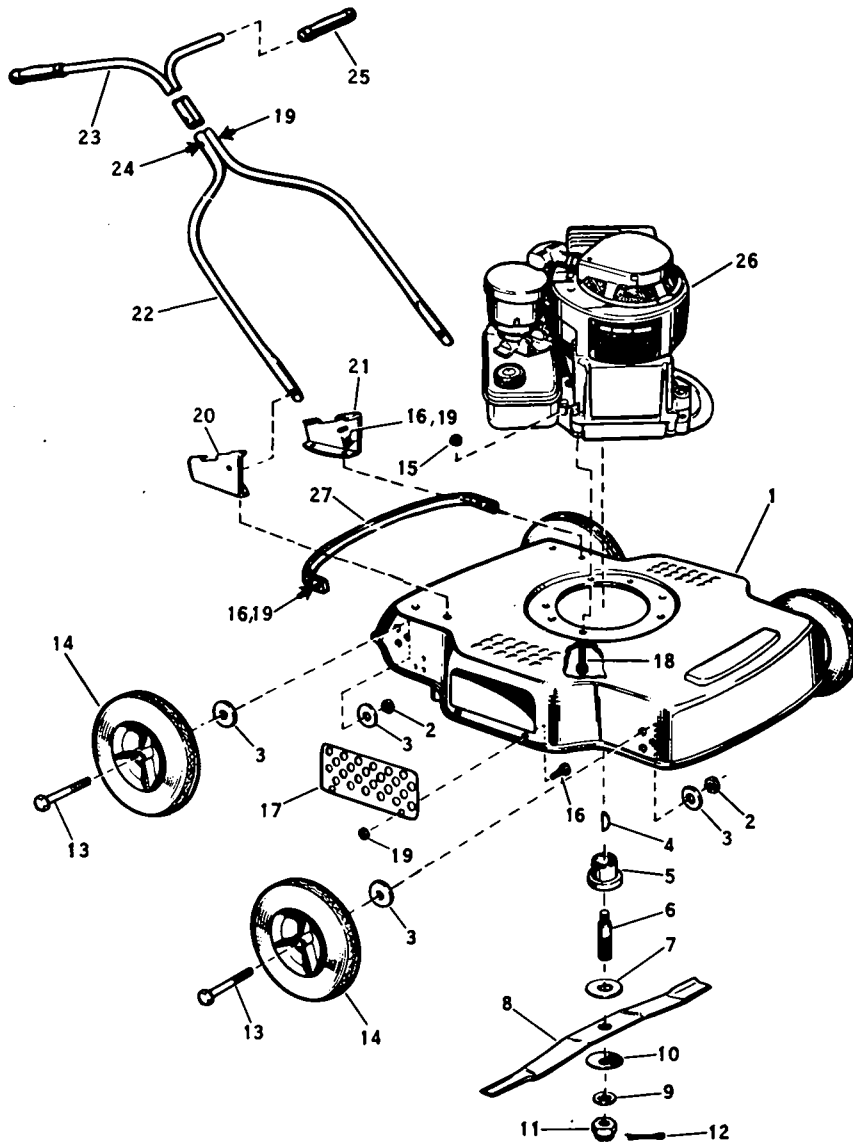


NOTE

Lubricate wheel bearings with #30 oil or equivalent as required, based on mowing conditions.

CUTTING BLADE

Whenever the cutting blade is removed for sharpening or replacement, care should be taken when re-assembling the washers and nut. The friction washer must be above the blade and steel washers below the blade. (Refer to exploded parts drawing.) When replacing the castellated nut, tighten it to fully compress the spring washer and then lock with cotter pin. When sharpening blade be sure to file off equal amounts from each side and always check blade to see that it is balanced. An unbalanced blade will cause excessive vibration. Also a sharp cutting edge on both ends of the blade will always give best mowing results by cutting the grass blades instead of bearing them off. Use a flat file to touch up the blade cutting edges -- do this often -- it only takes a few minutes to do.



Ref. No.	Part No.	Description	No. Req'd.
1	1892748	Base	1
2	1110108	Nut, 3/8-16NC	4
3	1891733	Washer	8
4	1100275	Key	1
5	1703259	Drive Coupling	1
6	1891160	Drive Stud	1
7	1702661	Friction Washer	1
8	1890627	Blade	1
9	1702662	Thrust Washer	1
10	1702660	Drive Washer	1
11	1100233	Drive Nut	1
12	1100350	Cotter Pin	1
13	1891555	Axle Bolt	4
14	1892409	Front Wheel, 6 x 1-1/2	4

Ref. No.	Part No.	Description	No. Req'd.
15	1110107	Nut, 5/16-18NC	3
16	1106832	Screw, 1/4-20NC	8
17	1892054	Mulcher Plate	1
18	1106880	Screw, 5/16-18NC x 1-1/8	3
19	1110106	Nut, 1/4-20NC	9
20	1891481	Handle Bracket RH	1
21	1891479	Handle Bracket LH	1
22	1892082	Lower Handle	1
23	1892220	Upper Handle	1
24	1106849	Screw, 1/4-20NC x 1-3/4	1
25	1892156	Grip	2
26		Engine B&S 6BHS	1
27	1705024	Guard	1