



**KOHLER ENGINE PARTS LIST
MODEL K 301 S
12 H.P. ELECTRIC START
SPEC 47814**

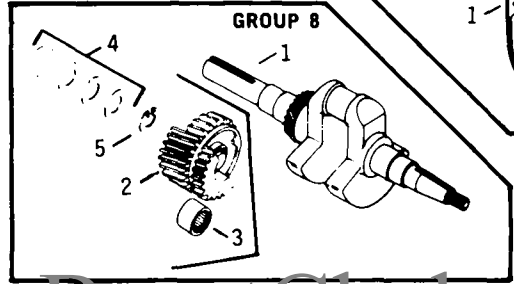
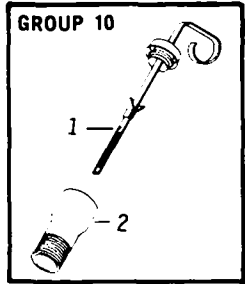
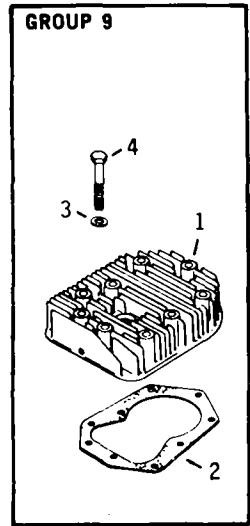
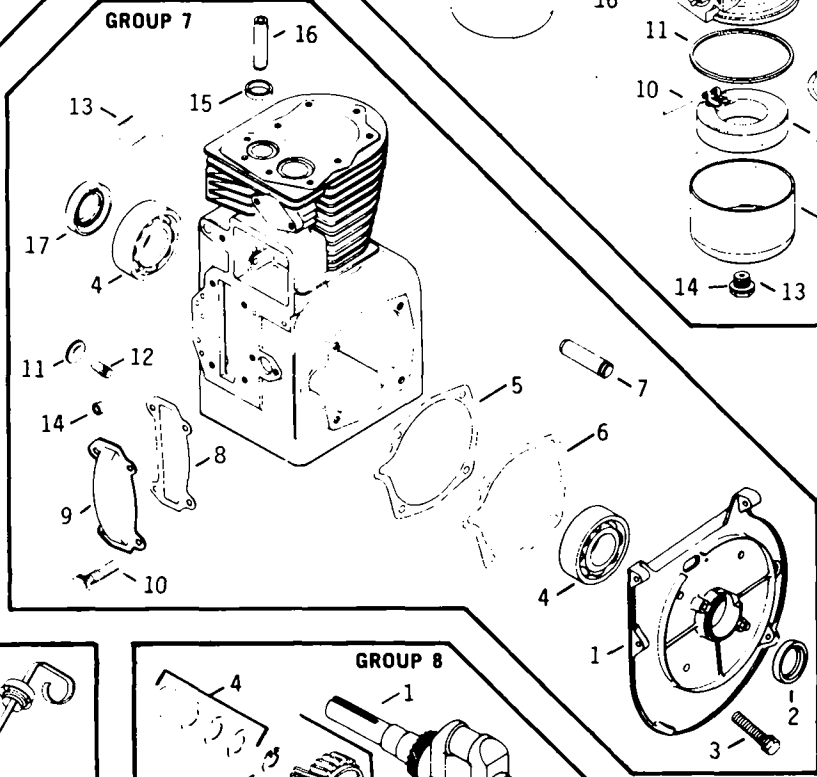
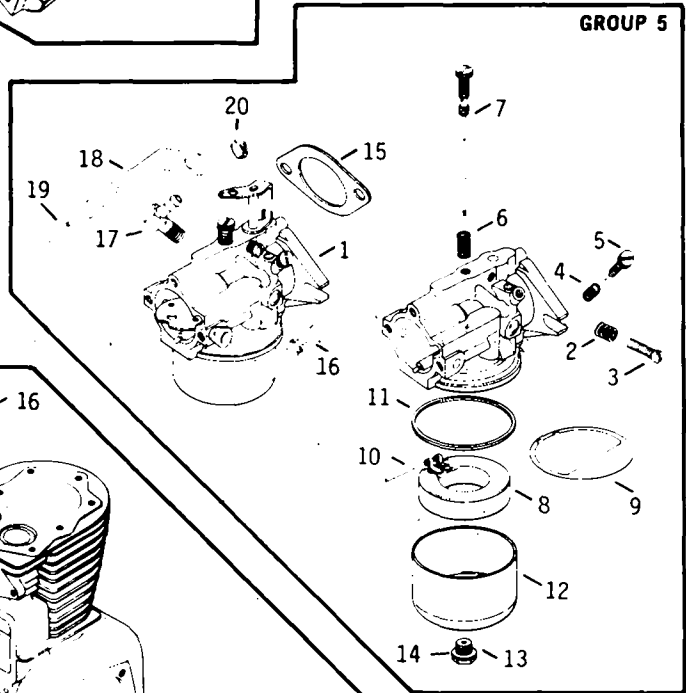
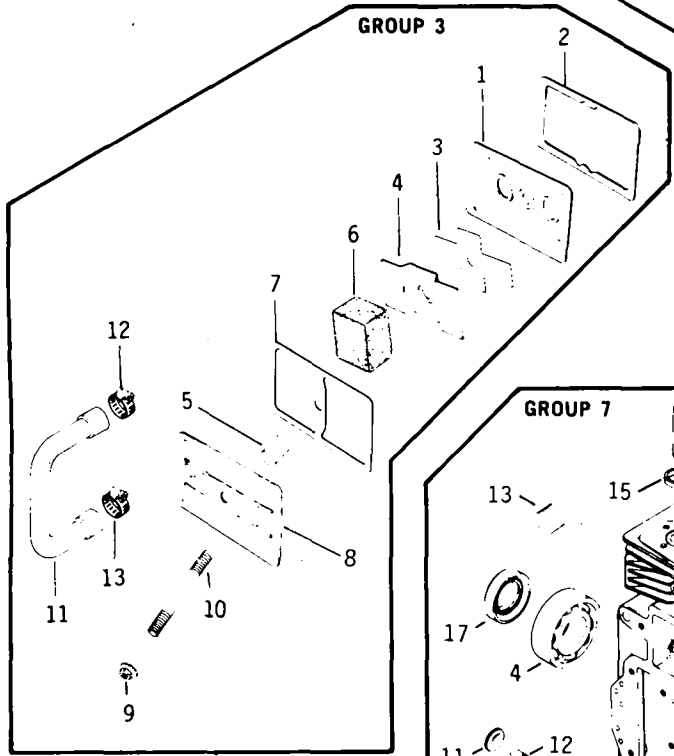
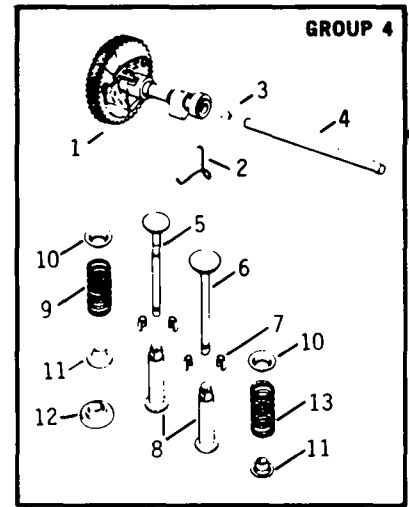
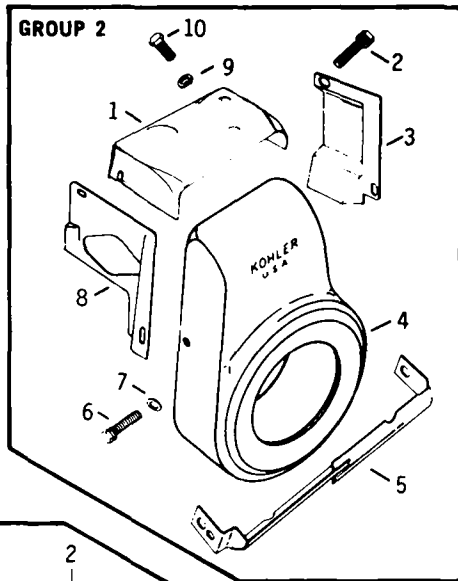
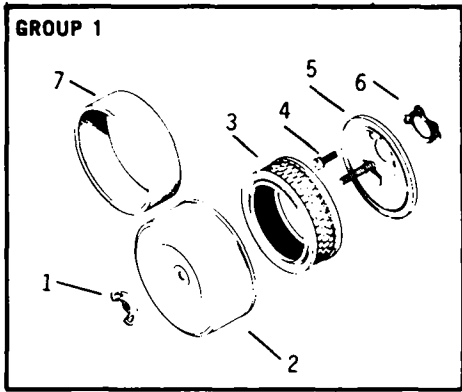
HAUSE EQUIPMENT, INC.
44 1/2 Morrison Road Denver, CO 80219
Between Federal and Sheridan
Colorado Toll Free 1 - 800 - 792-0000
Denver Metro Area (303) 954-0400

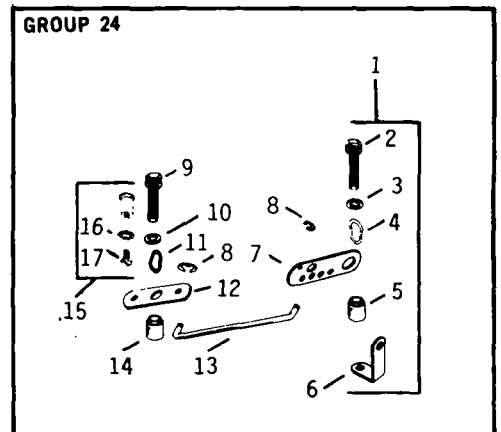
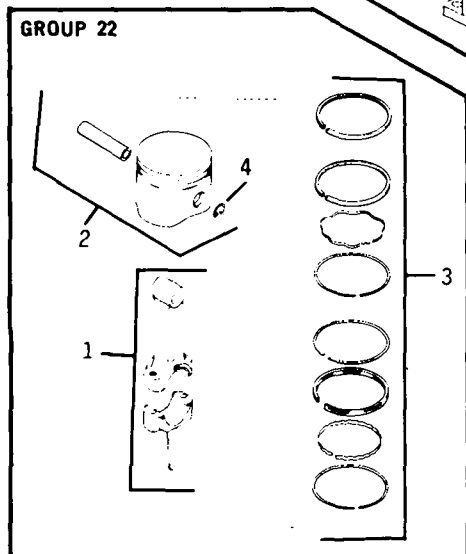
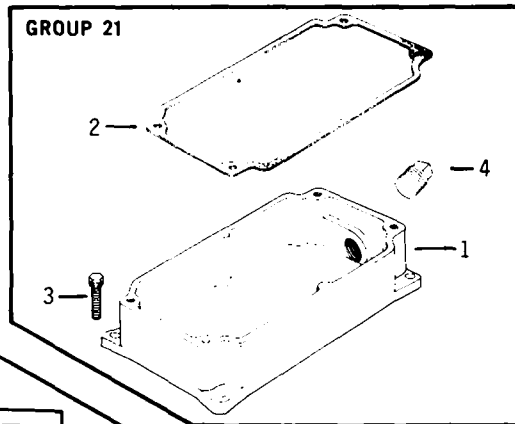
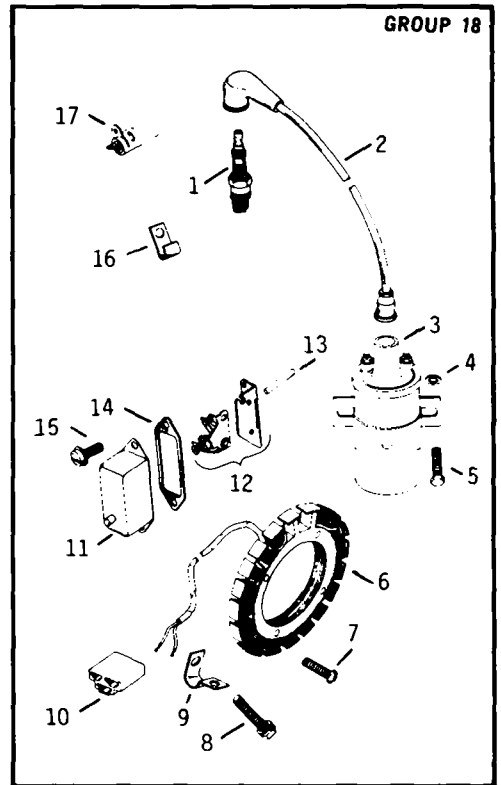
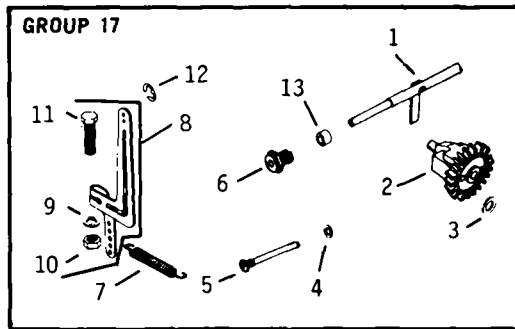
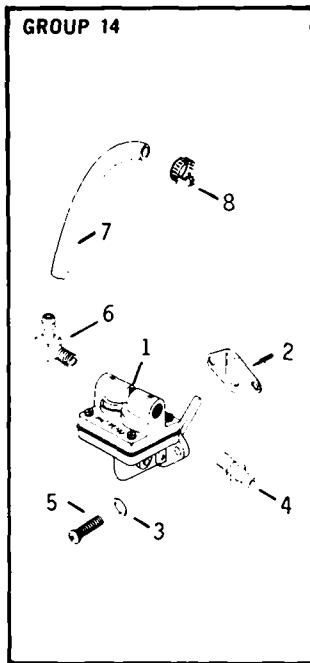
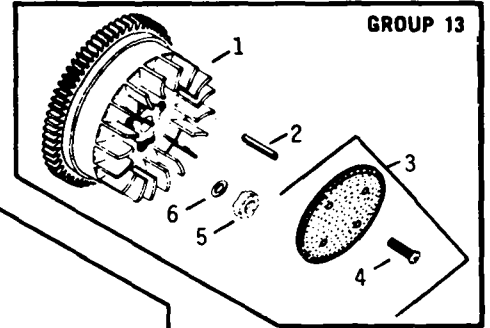
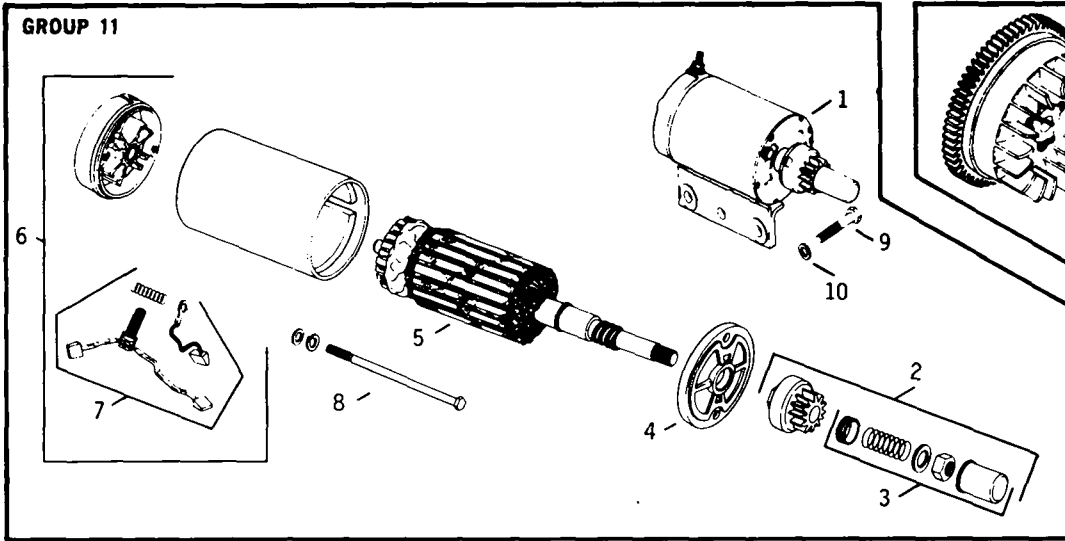
FORM NO: 38271 (6-84)

PART NO: 38264

PRINTED IN USA

BrentChalmers.com





<u>ITEM NO.</u>	<u>GRAVELY PART NO.</u>	<u>DESCRIPTION</u>	<u>KOHLER PART NO.</u>
<u>AIR INTAKE - GROUP 1</u>			
1	10413	Wing nut	X-276-7
2	10901	Cover, air cleaner	235102
3	10900	Element	235116
4	132100	Screw, H.C. 10-32x3/8 (3)	X-167-2
5	10949	Base, air cleaner	235101
6	10760	Gasket, air horn	275341
7	19332	Element, pre-cleaner	237421
<u>BAFFLES & SHROUD - GROUP 2</u>			
1	19905	Baffle, head	237677
2	180016	Screw, H.C. 1/4-20x1/2 (2)	X-132-6
3	12029	Baffle, cylinder	236676
4	14742	Housing, blower	236985
5	19694	Deflector	236847
6	180020	Screw, H.C. 1/4-20x3/4 (4)	X-132-2
7	120392	Washer, plain 1/4 (3)	X-25-53
8	14844	Baffle, side air	235652
9	120217	Washer, lock #10	X-22-22
10	188978	Screw, H.C. 10-24x3/8	X-97-3
<u>BREATHER & VENT - GROUP 3</u>			
1	10767	Plate, breather	235631
2	10770	Gasket, breather plate	235048
3	10771	Reed, breather	235047
4	10769	Baffle, breather	235117
5	10772	Seal, breather	231032
6	10768	Filter, breather	235118
7	10773	Gasket, valve cover	275144
8	21320	Cover, valve	275839
9	24881	Palnut 1/4-20	X-799-1
10	10774	Stud, valve cover	275220
11	24863	Hose	47 326 02
12	22146	Clamp, hose	X-426-9
13	24861	Clamp, hose	X-426-3
<u>CAMSHAFT & VALVES - GROUP 4</u>			
1	19542	Camshaft assembly	47 010 09
2	10947	Spring, actuating	47 089 01
3	10786	Spacer .005 (A.R.)	275066
	10787	Spacer .010 (A.R.)	275067
4	10783	Pin, camshaft	235193
5	10777	Valve, exhaust	235838
6	10776	Valve, intake	235008
7	10785	Kit, retainer (2)	41 755 10
8	10784	Tappet (2)	D-235327
9	10779	Spring, valve	235168
10	10780	Retainer, spring upper (2)	235011
11	10781	Retainer, valve spring	230011
12	10782	Rotator, valve	230020
13	10778	Spring, valve	235010

<u>ITEM NO.</u>	<u>GRAVELY PART NO.</u>	<u>DESCRIPTION</u>	<u>KOHLER PART NO.</u>
<u>CARBURETOR - GROUP 5</u>			
1	24868	Carburetor assembly	47 053 29
2	20249	Spring, idle speed	232555
3	32486	Screw, idle speed adj.	232556
4	14769	Spring, idle fuel	200380
5	14771	Needle, idle fuel adj.	235006
6	10927	Spring, main fuel	200383
7	10937	Needle, main fuel adj.	235415
8	35320	Kit, float	25 757 03
9	38746	Gasket, bowl baffle	200439
10	10926	Pin, float hinge	200376
11	10925	Gasket, bowl	200375
12	14772	Bowl, fuel	235448
13	24869	Screw, bowl retainer	47 100 06
14	10924	Gasket, bowl ret. screw	200372
	10792	Kit, carburetor repair	25 757 01
15	10790	Gasket, carburetor	271030
16	180079	Screw, sltd. hd. 5/16-18x1 (2)	X-770-1
17	14745	Connector	25 155 02
18	14746	Bracket, choke	A-236919
19	7331	Clip, choke	235603
20	22146	Clamp, hose	X-426-9

CRANKCASE - GROUP 7

1	34424	Plate, bearing	45 156 02
2	10800	Seal, front oil	47 032 06
3	180122	Screw, H.C. 3/8-16x1 (4)	X-159-2
4	10794	Bearing, ball (2)	235376
5	14747	Gasket, bearing plate	235757
6	10796	Gasket, brg. plate .010 (AR)	235070
7	14794	Shaft (2)	236559
8	10798	Gasket, camshaft cover	235025
9	10797	Cover, camshaft	235026
10	180016	Screw, H.C. 1/4-20x1/2 (4)	X-132-6
11	10948	Plug, expansion	X-230-11
12	11648	Shaft, governor	235125-S
13	34748	Plug, pipe hex. ctsk. 3/4 N.P.T.F.	47 139 01
		Block, cylinder assy. (USE: 47 782 28 miniblock)	
14	11647	Bearing	234866
15	12150	Insert, exhaust	230170
16	11646	Guide, valve	235007-S
17	34221	Seal, rear oil (2)	47 032 05

CRANKSHAFT - GROUP 8

1	12033	Crankshaft	B-236477
2	20945	Gear assembly (2)	47 042 01
3	34750	Bearing, needle (2)	47 030 01
4	20964	Kit, spacer	47 755 01
5	14796	Retainer (2)	X-269-34

<u>ITEM NO.</u>	<u>GRAVELY PART NO.</u>	<u>DESCRIPTION</u>	<u>KOHLER PART NO.</u>
<u>CYLINDER HEAD - GROUP 9</u>			
1	19908	Head, cylinder	237670
2	10803	Gasket, head	237658
3	10805	Washer 3/8 (10)	270889
4	180126	Screw, H.C. 3/8-16x1-1/2 (9)	270158
<u>DIPSTICK - GROUP 10</u>			
1	34751	Dipstick	237013
2	38747	Tube, oil fill	237012
<u>ELECTRIC START - GROUP 11</u>			
1	19581	Starter assembly	A-237534
2	18753	Kit, drive	47 755 07
3	24936	Kit, drive parts	47 755 13
4	20257	Cap, drive end	237650
5	24873	Armature	47 170 01
6	24875	Cap, commutator end	48 227 04
7	18610	Kit, brush	48 755 15
8	20256	Thru-bolt, w/washers (2)	237649
9	19895	Screw, H.C. 3/8-16x1-11/32 (2)	234948
10	120381	Washer, lock 3/8 (2)	X-22-1
<u>FLYWHEEL - GROUP 13</u>			
1	20426	Flywheel	47 025 20
2	15987	Key	X-286-17
3	12044	Kit, grass screen	47 755 15
4	32587	Screw, T.H. 1/4-20x5/8 (4)	47 086 08
5	10952	Nut, lock 5/8-18	X-119-14
6	11988	Washer, plain 5/8	X-25-104
<u>FUEL PUMP - GROUP 14</u>			
1	38789	Pump, fuel	47 559 04
2	22261	Gasket, fuel pump	47 041 04
3	32685	Washer, plain 1/4 (2)	X-25-63
4	22145	Connector	X-380-2
5	32587	Screw, F.H.M. 1/4-20x3/4 (2)	X-174-2
6	14745	Connector, hose	25 155 02
7	24888	Line	X-810-6
8	22146	Clamp, hose (2)	X-426-9
<u>GOVERNOR - GROUP 17</u>			
1	19583	Shaft, governor cross	237455
2	10823	Kit, governor gear	A-235743-S
3	19550	Washer, thrust	237022
4	34171	Washer, plain 1/4	X-25-12
5	10833	Pin, governor stop	231355
6	10826	Bushing	235476
7	10824	Spring, governor	235496
8	10825	Lever, governor assy.	A-237653

<u>ITEM NO.</u>	<u>GRAVELY PART NO.</u>	<u>DESCRIPTION</u>	<u>KOHLER PART NO.</u>
<u>GOVERNOR - GROUP 17 (cont'd)</u>			
9	10954	Washer, plain 1/4	X-25-72
10	120375	Nut, hex 1/4-20	X-81-1
11	24880	Screw, sems 1/4-20x1/1-4	X-776-1
12	10827	Retainer, rod	235278
13	19595	Spacer	X-400-80

IGNITION - GROUP 18

1	10842	Plug, spark	235041-S
2	11822	Kit, hi-tension lead	238057
3	22152	Coil	231281
4	120392	Washer, plain 1/4	X-25-52
5	180020	Screw, sems phillips 1/4-20x3/4 (2)	X-174-2
6	18626	Kit, stator	237878
7	22151	Screw, R.H. 10-24x3/4 (4)	X-778-1
8	10956	Screw, self-tapping hex. hd. 8-32x3/8	X-67-59
9	19565	Clip	X-728-1
10	19899	Connector	48 155 02
11	10841	Cover, breaker	232535
12	15435	Breaker	47 150 03
13	22263	Rod, breaker	47 411 04
14	10839	Gasket, breaker	52 041 11
15	133556	Screw, F.H.M. 10-24x3/8 (4)	X-131-1
16	10846	Clip	275303
17	11824	Condenser	230722

OIL PAN - GROUP 21

1	12147	Base, oil pan	235115
2	12148	Gasket, pan	235057
3	180124	Screw, H.C. 3/8-16x1-1/4 (4)	X-159-3
4	22155	Plug, pipe sq. hd. solid 3/4	X-75-6

PISTON & ROD - GROUP 22

1	19394	Rod, conn. assy. (Std.)	A-237344
	14785	Rod, conn. assy. (.010)	A-237344-10
2	12368	Piston assembly (Std.)	47 074 16
	22266	Piston assembly (.003)	47 074 17
	12369	Piston assembly (.010)	47 074 18
	12370	Piston assembly (.020)	47 074 19
	12371	Piston assembly (.030)	47 074 20
3	12363	Ring set (Std. & .003)	235889
	12364	Ring set (.010)	235890
	12365	Ring set (.020)	235891
	12366	Ring set (.030)	235892
4	10856	Retainer (2)	47 018 01

<u>ITEM NO.</u>	<u>GRAVELY PART NO.</u>	<u>DESCRIPTION</u>	<u>KOHLER PART NO.</u>
<u>THROTTLE CABLE - GROUP 24</u>			
1	34798	Bracket, control assy.	A-236896
2	10835	Screw, H.C. 1/4-20x1-1/4	X-132-9
3	32685	Washer, plain 1/4	X-25-63
4	10822	Washer, tension	275690
5	10831	Spacer	235085
6	10832	Bracket, adj. screw	235084
7	10830	Bracket, speed control	235086
8	10827	Retainer, ring (2)	235278
9	180022	Screw, H.C. 1/4-20x1	X-132-4
10	32685	Washer, plain 1/4	X-25-63
11	10822	Washer, tension	275690
12	11828	Bell crank	236752
13	11827	Rod, throttle	235756
14	10831	Spacer	235085
15	10834	Kit, clamp	48-755-10
16	34226	Washer, plain 1/4	X-25-102
17	34227	Screw, P.H. 8-32x1/4	X-51-8
	38752	Miniblock	47-782-28
	38754	Shortblock	47-522-86
	34228	Gasket set w/seal	47-755-08
	14766	Gasket set w/o seals	47-004-01

HAUSE EQUIPMENT, INC.
 4444 Morrison Road Denver, CO 80219
 Between Federal and Sheridan
 Colorado Toll Free 1-800-792-0300
 Denver Metro Area (303) 934-5438



SET UP INSTRUCTIONS

NAME: BATTERY SERVICE

**PART NUMBER(S): 7274 30609
15256 30610**

These instructions give the procedure for activating the battery.

! WARNING: Always wear eye protection when giving service to the battery.

1. Remove the battery from the tractor.
2. Put the battery and the electrolyte in an area where the temperature is above 65°F (18°C)

! WARNING: Make sure the area has good ventilation.

3. Use electrolyte that has a specific gravity of 1.265.
4. Remove the filler caps from the battery.

! WARNING: Use caution, electrolyte will cause damage.

5. Add electrolyte to each cell until the level is at the bottom of the filler tubes.
6. Wait 20 minutes before connecting the battery charger to the battery.

! WARNING: Make sure the battery charger is "OFF" before connecting the battery.

7. Connect the positive (+) cable of the battery charger to the positive (+) post of the battery.
8. Connect the negative (—) cable of the battery to the negative (—) post of the battery.
9. Charge the battery that has the Gravely part number 7274 at the following rates:

- A. 30 amps for 20 minutes.
- B. 15 amps for 40 minutes.
- C. 6 amps for 100 minutes.

Charge the battery that has the Gravely part number 15256, 30609, or 30610 at the following rates:

- A. 6 to 8 amps for 20 minutes.

! WARNING: Turn the battery charger "OFF" before disconnecting the cables from the battery.

10. Disconnect the cables of the battery charger from the battery.
11. After charging, check the level of the electrolyte in the battery. If necessary, add electrolyte until the level is at the bottom of the filler tubes.
12. After charging, wait 20 minutes before installing the filler caps.
13. When the filler caps have been installed, put the battery in the tractor.
14. Connect the positive (+) cable to the positive (+) post of the battery.
15. Connect the negative (—) cable to the negative (—) post of the battery.
16. Tighten the connections.

While the tractor is in storage, a slow charge (3 amp for 8 hours) every two to three weeks will increase the life of the battery.

! WARNING: Always remove the filler caps when charging the battery.

HAUSE EQUIPMENT, INC.
4444 Morrison Road Denver, CO 80219
Between Federal and Sheridan
Colorado Toll Free 1 - 800 - 792-6000
Denver Metro Area (303) 934-3408

Form No. 31973 (1-80)

Printed in U.S.A.

BrentChalmers.com 

To continue its program of quality and design improvement, the manufacturer reserves the right to change specifications, designs and prices without notice and incurring obligation.