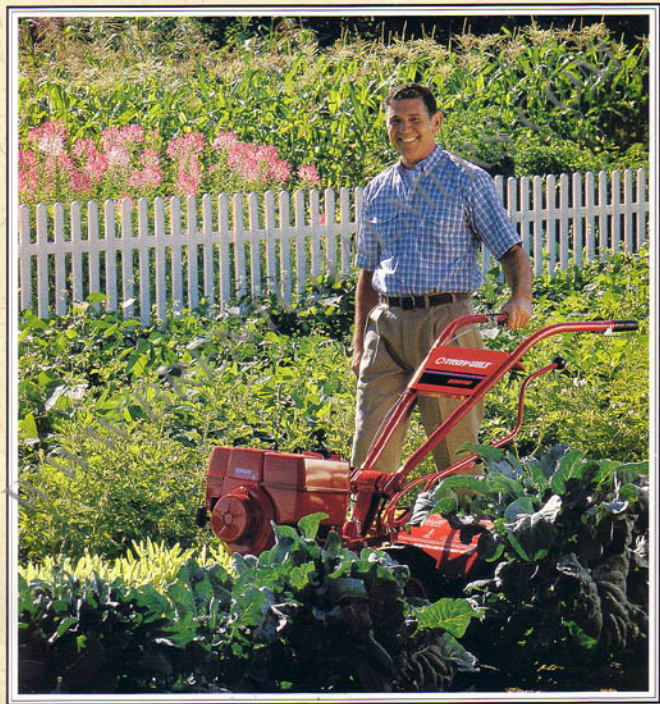


TROY-BILT GREAT GARDENS



Time-And Work-Saving Secrets To Help You
Grow The Garden Of Your Dreams.

TROY-BILT GREAT GARDENS

Introducing...the easier and more productive **TROY-BILT** Tiller way of gardening.



p. 2

An American legend, a way of lifep. 2

8 Promises of garden successp. 4

Make every garden task easyp.12

We have our own gardening
"secrets"p.24



p.36



p.40

Every size garden can be vitalizedp.36

Perfectly worked soil, with
JUST ONE HAND*p.40

Built by gardeners, for gardenersp.44

Excellent Customer Service is
our "code"p.52

Dedicated to the true joys of
gardeningp.56

Our Owners tell the Tiller story
bestp.60

There's a TROY-BILT* Tiller right
for youp.63



p.56



p.52





Our heritage makes the TROY-BILT® Tiller an American gardening legend.

Dear Gardening Friend,

As I sat down to write this note to you this morning, I couldn't help reflecting on all the TROY-BILT memories that surround me right here at my desk.

Looking back at all the pictures, personal mementos, and letters from our customers, I was proud to realize that we've been helping to build great American gardens for decades now. We've helped more than a million customers live more healthful, active, and productive lives through vegetable gardening, while caring deeply for this great land we all share. It's a commitment we've taken seriously for a long time, and continue to take seriously today.

An "old-fashioned" idea whose time has come around again is *quality*. You hear it everywhere these days...to the point where it almost loses its meaning. Well, not with TROY-BILT! From the beginning, we've been dedicated to building the best...*period!* No pretense, no fakery, no hollow words. That's why we back every TROY-BILT® Tiller with a *Full No-Time-Limit Warranty*. We learned long ago that "no compromise" means just that...*no compromise in quality!*

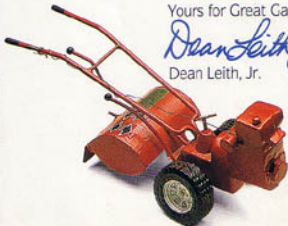
That level of commitment and concern for the quality of our products just naturally extends to you — and every customer — as well. You really are the cornerstone of our business, and your 100% satisfaction is the only true measure of our success.

So, I hope you enjoy this brand-new TROY-BILT Great Gardens Catalog we've put together. It's packed with real "down-to-earth" vegetable gardening know-how...and of course, lots of practical information on how to have your greatest garden ever, the TROY-BILT® Tiller way!

Yours for Great Gardening,

Dean Leith, Jr.

Dean Leith, Jr.





We offer every gardener 8 Promises of Garden Success.

1 Gardening will become easier than ever before.

If you are a gardener, you have probably had experience with a variety of tools and techniques. You can certainly have a nice garden using only hand tools—but the sheer effort involved just to have a small plot makes you wonder if it's worth it all.

If you've used a front-end tiller, you know what torture it is on your arms and back to try to hold on and steer a machine that bucks and jumps constantly, and doesn't do all that good a job to begin with.

A TROY-BILT® Tiller is easy to use, you simply guide it with JUST ONE HAND!®

Thanks to the TROY-BILT® Roto Tiller, gardening can be far easier than ever before. Thousands of gardeners have already discovered the beautiful simplicity of our machines.

Powered wheels move the machine at a steady, even pace. Rapidly turning tines in the rear mill and mix the soil into even-textured, fine, velvety seedbeds that don't even require raking in most cases.

The tines chop and shred organic matter—even standing cornstalks—and bury it in your soil, turning your whole garden into a fabulously fertile compost pile.

What is a successful garden? We think it's one that rewards your family with life's simple pleasures.



You can enjoy a bountiful supply of beautiful garden vegetables, with help from a TROY-BILT® Tiller!

Balance is nearly perfect. The weight of the engine is counter balanced by the tines, with the wheels as the fulcrum. This unique design feature makes a TROY-BILT Tiller easy to maneuver around plants, simple to turn at row's end.

Gardening is now possible and pleasurable for older folks. Many of our customers are in their 70's, 80's, and even 90's, and report that without the TROY-BILT Tiller, they'd have to give up gardening.

We have many customers with limitations on their physical abilities. Over the years, we've heard from hundreds who give us a heartfelt thanks for providing a machine that's so simple and easy to run, it enables them to garden successfully.

2 You'll get more work done in less time.

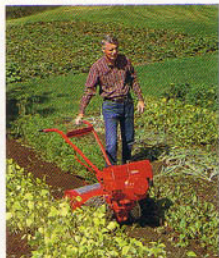
Many people begin gardening on a small scale; they grow a tiny plot with just the aid of rakes, hoes, and shovels. This form of gardening is pleasant and rewarding—as long as you keep things small.

Rewarding by gardening successes, many small-scale gardeners go on to expand their plots, while holding on to their by-hand methods.

But hardwork that's easy in a 10'X10' garden is time-consuming and difficult in a 20'X20' plot. Cultivating can take hours; turning the soil is overwhelming.

Now you can get even big jobs done quickly.

Because our TROY-BILT® Tiller is designed to handle every garden task, extensive handwork is eliminated. You'll accomplish more before breakfast than you could have done all morning with older hand methods.



The TROY-BILT® Tiller does all the work, making gardening possible for thousands who couldn't garden any other way.

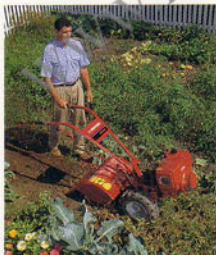
You'll turn sod into a garden without touching a shovel. "Sodbusting" is easy with a TROY-BILT® Tiller; just till over the same ground, deeper and deeper with each pass. When the grass rhizomes sprout new shoots, till again—you'll destroy them without chemicals!

Spring ground breaking of your established plot is done in record time—we've tilled a 1,000 square foot garden in under 90 minutes!

Many soil types will be ready to plant the instant you're done tilling. Because the Tiller mills soil so fine, and "fluffs" it up by mixing in air, your soil takes on the texture of velvety cake mix. The machine even smooths the surface; it's literally a perfect, ready-to-plant seedbed.

Never again spend hours hand-weeding. Simply run the Tiller up and down the aisles; by stirring the top inch or two of soil, you'll bury sprouting weed seeds and interrupt the weed cycle. In a recent time trial, we cultivated a 150 foot row of corn in only *one* minute with a TROY-BILT® Tiller, compared to 13 minutes by hand.

And in the fall, put your garden to bed the right way. Quickly till in crop residues so



Don't waste time hauling away crop residues; simply turn them into your garden; they're a feast for soil organisms!

pests won't have a winter home at your expense. Turn fall leaves or Green Manure Cover Crops into the soil, to give your garden a boost of natural nutrients and organic matter. You build your soil, while making your garden neat and tidy for winter.

3 You'll grow more vegetables...of better quality.

Because it's easier to maintain a larger, more productive garden with a TROY-BILT® Tiller, you'll have more vegetables than ever before, all season long. You'll plant earlier, harvest earlier, and for a longer period. You'll enjoy fresh eating all season, and have plenty to put by for winter.



Have a bountiful harvest, all season long, as a succession of vegetables come to maturity.

In early spring, your table will be laden with rhubarb and asparagus of gourmet quality. Summer will bring wave after wave of peas, beans, lettuce, and greens. By late summer and fall, the family's used to fine eating, and welcomes an abundance of sweet corn, root crops, winter squash, potatoes, and much more.

You may need a freezer, because TROY-BILT® Tiller gardeners are famous for producing more than enough food for themselves, their neighbors, friends, co-workers, and relatives. Many Owners make regular donations of fresh, home-grown vegetables to local food shelves and churches, and are glad for such a pleasant way to contribute to mankind.



America's favorite vegetable is the tomato...and you'll grow them bigger, more luscious with a TROY-BILT® Tiller.



Ready to plant seedbeds in just a fraction of the time... smooth, flat, even, with no raking.

Grow vegetables of better quality than you can possibly buy in the supermarket — fresh, pure, and wholesome. You have complete control over the varieties you grow and the chemicals you use (or don't use). TROY-BILT® Tiller families dine like kings!

Actually double—even triple—your yields!

Your garden can produce three times the vegetables, in the very same space, with Wide Row growing. Use the Tiller to create rows one to four feet wide. Broadcast seed over the entire area, instead of in single-file rows. Because more garden area is under cultivation, you'll get two or three times the vegetables for every square foot.

Later in the year, use the Tiller to turn under gone-by vegetables. The spent crops feed your soil, and you can plant a second-season crop in the open space they've vacated. Follow early peas with a planting of lettuce; follow a first crop of broccoli with a second one; have three crops of lettuce in the same space through the season.



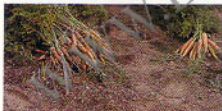
These photos are from two neighboring gardens in Ohio. Both began as identical soil types; a heavy clay. The one at the left is as Nature made it—it bakes so hard and dense, plants have a hard time breaking through. The one at right had heavy infusions of sand and organic matter, tilled in by the Owner's TROY-BILT® Tiller. It's perfect soil now!



4 Your soil will come alive with richness and fertility.

Having healthy soil is the first step in growing a truly great garden. Healthy soil is dark and rich with nutrients and microbial life. It is packed full of organic matter that keeps the soil alive, retains just the right amount of water, draws earthworms, and imparts a smooth, light, crumbly texture.

Yet very few garden spots are naturally blessed with ideal soil. Many gardens contain heavy clay that forms clods and clumps, dries out slowly, and can bake hard as a rock.



The carrots on the right were harvested from a one foot length of a single-file row. The carrots on the left are the harvest from a Wide Row of the same length. Wide Rows double—even triple—the yields!

Rich, healthy soil holds moisture, contains essential nutrients, and is a joy to hold in your hands.

Others contain too much sand. Water leaks through like a sieve, the soil is nutrient-poor, plants dry and "burn" in a hurry. Rocky, wet, sandy, clay-filled, rock-hard...these are the soil conditions gardeners face.

You can vastly improve any soil type!

You can build your own "Super Soil" with the TROY-BILT® Tiller. It's actually quite simple: organic matter is the single ingredient that solves nearly every soil problem.

By tilling in quantities of organic matter, you build up the texture of "thin" sandy soil. Organic matter loosens too-dense clay soil, so air, light, and moisture can penetrate.

The TROY-BILT® Tiller is a rugged Power Composter that can improve any soil. It easily chops and deeply buries all types of organic matter as you till. Turn in fall leaves, crop residues, standing cornstalks, Cover Crops you grow expressly to improve your soil. You will be amazed at the difference they make!



Rich, loose, and a full eight inches deep, soil like this goes a long way toward guaranteeing you gardening success.



5 You'll conquer weeds that plague your garden.

Weeds can overwhelm the garden (and the gardener!) in just a week or two. One day, they're tiny shoots in among your sprouting lettuce...two weeks later, they're a foot tall, dominant, spreading, stealing light and water from your young lettuce plants.

Worse, every weed that goes to seed can produce as many as 150,000 weed seeds, most of which end up in your garden soil. Some sprout now; many others lie dormant for years, waiting for the right conditions to emerge.



Weeds can easily take over your whole garden. By the time they're this tall, you've lost the battle.

Your garden can be well groomed, weed-free and beautiful, all season.

By cultivating regularly with the TROY-BILT® Tiller, your garden can stay weed-free all season long. Just set it to till only an inch or two deep, and walk it up and down your aisles. Weeds are whisked away as you simply guide the machine.

Designed for dry regions, our V-Sweep Cultivator Attachment skims just under the surface to cut off weeds. Because it doesn't turn the soil, it conserves moisture.

Our Hiller/Furrower Attachment gently pushes loose soil between plants in your rows.

Hand work is virtually eliminated as you use the Tiller to smother weeds between beans, corn, and potato plants.

It's very easy to cultivate most vegetables. Just till in the aisles to loosen soil and kill weeds by turning them under. Touch things up by drawing the loosened soil close to your plants with a rake or hoe.

You'll see an immediate improvement in your garden after TROY-BILT® Tiller cultivation. The rows are neat, straight, and weedless. And over time, you'll reduce the number of weed seeds in your soil...so your gardening will get easier and easier.



Gardening will always require some hand work, but it's strictly touch-ups, once you own a TROY-BILT® Tiller.



Weed your whole garden in just minutes with the Tiller. We've cultivated a 100-foot aisle in under 1 minute!

6 Stretch the garden season a month on each end.



Earliest ever planting of peas, thanks to a simple TROY-BILT® Tiller "Secret".

Fast starts in spring begin the fall before, for clever TROY-BILT® Tiller gardeners. Just put your garden to bed in early autumn. But when you do, put in several Raised Beds, and leave them there through the winter.

Because they're exposed to sun and wind, they dry out quicker, so you can get earliest crops planted as much as a month before your neighbors.

Succession Planting yields "baby" vegetables all summer

Rather than contenting yourself with a single planting of lettuce that gets tougher and more bitter until it finally bolts—or being satisfied with rubbery, fourth-pick beans—try Succession Planting. It's easier than ever with a TROY-BILT® Tiller, because you can maneuver into a crowded garden and selectively till under spent crops.

When your beans have borne two or three pickings, till them in immediately. Wait a few days for the plants to decompose, then replant in the same spot. You'll have a second crop bearing tender young beans before long.

Harvest through the fall, on into winter. A late planting of brussels sprouts or turnips won't

get hurt by a little cold weather... and the flavor actually improves when they're touched by frost.

Have you planted your late carrots in nice Wide Rows? Leave them in the soil, and lay on an insulating blanket of fall leaves a foot or two deep. The ground stays unfrozen; you can dig them fresh, right through February.

Gamble on vegetables you thought were too tender for your climate. When you've put your soil in good shape with a TROY-BILT® Tiller, vegetables stand the very best chance of surviving the stresses of cold, heat, too much or too little water.

We have many northern gardeners who successfully grow peanuts, watermelon, cantaloupes, and other fruits and vegetables they thought they had no business even considering. And our southern gardeners report two and even three successful gardens in a year, thanks to their TROY-BILT® Tillers.

You may just surprise yourself by being able to harvest fresh vegetables far beyond your normal growing season.



"My kids had never tasted vine-fresh tomatoes..."

There was nothing like the expression on my own children's faces the first time they went into the garden and picked a tomato, a warm tomato off of the vine and ate it right there and said they'd never tasted anything like it. These kids had been eating tomatoes for 20 years and all of a sudden they tasted a tomato for the first time. Now the kids are out in the garden all the time! It's a thrill to share gardening with someone you love.

Pete Barbutti,
Las Vegas, NV



7 Over time, you'll become an expert gardener.

There's less starding between you and success, when you're a TROY-BILT® Tiller Owner. Building ideal soil is simple. Ground-breaking is easy. Planting is vastly simplified. Cultivation takes very little time. Putting your garden to bed the right way is a pleasure.

Because you've got the right equipment, you don't need to dwell on how you'll get the job done. You can spend your time and energy on the finer points of gardening—like choosing special seed varieties, how to beat those early cold snaps, how to have broccoli all season long. That's where the rewards are.



It's hard to grow perfect celery, but TROY-BILT® Tiller gardeners love challenges like this.



How many Blue Ribbon Winners are TROY-BILT® Tiller Owners? Why not ask them at Your County Fair.

Our Owners are among America's very finest gardeners.

Many write us with special techniques they've developed on their own. A few are regular contributors to the finest gardening magazines. A large number are frequent winners at County Fairs and garden competitions at local and even national levels.

Overwhelmingly, they credit the TROY-BILT® Tiller with erasing their concerns over manual labor, and making it possible for them to concentrate on growing better and better gardens.

With a TROY-BILT® Tiller, you can become an expert gardener. If you use it as we suggest, you'll save time and energy, which you can devote to enjoying your garden. You'll have the time and equipment to try new, unusual

vegetables, and varieties not usually grown in your area.

You'll have a way to insulate your soil against wet and dry spells...and to start gardening earlier in the spring and finish later in the fall.

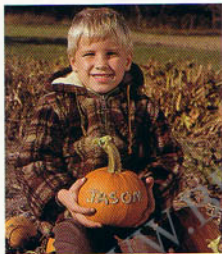
Because you'll experience more success, you'll gain the patience to weather a few difficult growing seasons.

And most of all, because you see the fruits of your labors increase, your faith in your own abilities will grow. As you gain experience, success, and learn new "tricks", you'll find pleasure in experimenting. And isn't that what being an expert gardener is all about?

8 You will rediscover the joy of gardening.

Many gardeners' first experiences with gardening were filled with amazement and wonder. We often hear the fond remembrances of elderly gardeners who recall a summer morning decades ago, when as children, they first placed seeds in soil. "I couldn't believe it when the plants came up," they almost always say...then smile.

That childlike fascination with nature, with sunlight and soil, lasts a good long time—for some of us gardeners, it lasts a lifetime. But for many, the pure enjoyment dims when the end-product of gardening becomes more important than the process itself.



The simple pleasure of gardening can last a full and rich lifetime.

No garden is as memorable as the first you grew yourself.

Perhaps you first tried gardening as a teen, or a young adult. Some people get "the gardening bug" in their golden years. No matter when you began, most first-time gardeners found it to be pure fascination, and the effort involved was fun, not work. Today, with a TROY-BILT® Tiller, the work of gardening slips away, and the pleasure you once knew remains.



Where did you first learn to garden? For many life-long gardeners, it was at the knee of a parent who shared the awe, the fascination, the ritual.

Ease-of-use guarantees joyful gardening.

A fine tool increases your enjoyment, because you can concentrate on the task at hand, not how to get the task done. That's the beauty of the TROY-BILT® Tiller. It's a wonderfully simple machine that handles almost every gardening job with ease.

Because you don't have to work very hard once you own a TROY-BILT® Tiller, you can get

down to the basics that attracted you to gardening in the first place...seeds, soil, sun, and the pleasure of watching things grow.

We promise, with a TROY-BILT® Tiller, you'll garden with less effort. You'll do it more expertly, and get more done in less time. You'll know all the joy of gardening...and have more gardening success than you've ever had before!



In an unpredictable world, it's reassuring to know you can always put food on the table if you grow a garden.



This classic machine handles most gardening tasks with JUST ONE HAND.

An utterly simple machine... a multi-function workhorse.

Even at first glance, you can see the TROY-BILT® Tiller is all business. The design is spare... utilitarian...purely functional. Nothing's hidden. You see exactly what you get: a strikingly efficient machine that easily handles every function in your garden—and many jobs outside your garden as well.

The classic gardening machine, it's America's first rear-tine Roto Tiller.

The TROY-BILT® Tiller is a powerful machine that digs, turns, mixes, and mills the soil into ideal texture for gardening. As a Tiller, it breaks new ground, makes perfect seedbeds, Speed-Plants, makes Raised Beds, cultivates, weeds, and more. Commonly regarded as "the very best there is", owning a TROY-BILT® Tiller is the dream of every serious gardener. Our



If you love to garden, you already know which tiller is America's finest: the classic TROY-BILT® Tiller.

Owners grow better gardens once they have our Tiller; it makes every gardening job easy.

It builds soil because it's a strong and efficient Power Composter.

In large part, the success of your garden depends on the

quality of your soil. At last, you can efficiently make amendments that vastly improve the quality and texture of any soil, with this rugged Power Composter.

The TROY-BILT® Tiller is a machine with the amazing capability to chop organic matter as it stirs in the garden, and bury it deep in the soil. As a Power Composter, it automatically recycles leaves, Green Manure Cover Crops, and garden residues. By recycling organic matter, your soil quality is vastly improved.

Performing jobs outside the garden, it's also a versatile Power Landscaper.

Many families that grow a vegetable garden have larger-than-average properties. They tend to be active, hands-on people who do lots of outdoor jobs...often including landscaping and heating with wood.



This is America's original, classic legendary rear-tine Roto Tiller.



Power to recycle organic matter with this impressive Power Composter.



Tremendous versatility because it's also a multi-function Power Landscaper.



Bust sod the easy way by tilling it right into the soil where it will decompose without having to be removed.

With its PTO (Power Take Off) capability, the Horse Model is a versatile, all-property workhorse that lets you build a new lawn or renovate an old one, put in flower beds and shrubbery, bring electric power to remote areas

Break new ground easily with a TROY-BILT® Tiller.

Just as a power lawnmower vastly reduces the effort of lawn care, a power Tiller takes the hard work out of gardening. The ability to turn soil in a variety of conditions is the primary task of every garden Tiller.

Whether you're breaking ground to start a new garden, preparing a perfect seedbed for spring planting, or eliminating weeds with shallow cultivation...a quality Tiller makes every gardening task easy.

Perhaps you have a spot of lawn you'd rather garden than mow. Or you may wish to expand a smaller garden, and wonder just how to go about doing it without breaking your back.

If the ground's covered with tall grass or weeds, you should mow it first. Then, set the TROY-BILT® Tiller's depth regulator at the shallowest setting...so it just scratches the surface. Make several passes, setting the depth deeper and deeper each time.

Very shortly, you'll have "busted" all the sod and made a rich, loose bed a full six inches deep or deeper. Let the ground stand for several days, then re-till (at full depth) to smother any weeds or grass shoots that have emerged.

Any time of the year is fine for busting sod, but fall is especially good: you can till in leaves which will decompose over winter, and make the soil richer.

Ready-to-plant seedbeds without hand work.

When the weather warms in spring, you'll spend a few pleasant hours getting your established garden ready to plant this year's garden.

This is a good time to take a soil test and add soil amendments like lime or sulphur to lower or raise your soil's pH. Spread evenly over the surface, and simply till the amendment in as you work up the soil.

Set the TROY-BILT® Tiller's depth regulator at a medium setting, and make parallel passes back and forth. Make more passes until you can set the Tiller at its full depth. Walk alongside, guiding the TROY-BILT® Tiller with **JUST ONE HAND®**.



Turn hard-packed soil into a loose, fluffy seedbed by making several passes of increasing depth.

Soil so loose, you sink in over your shoes.

Most gardeners just can't believe the depth and richness of a freshly tilled TROY-BILT seedbed! As you till, your soil is loosened as it's broken into fine bits, and "fluffed up" as air is folded in.



The ideal seedbed is loose, crumbly, deep, and smooth. It's easy with a TROY-BILT® Tiller!

As you tread on the fully-tilled garden to mark out your rows, you'll sink into the soft surface; the soil's that loose. In one simple step, you've gotten your garden soil into perfect shape for planting.

Plant your entire garden in just 1/3 the time.

Planting day has always meant stakes and string to lay out rows, rakes to form them, and hoes to open and close the furrows over the seeds you drop by hand. All of these steps can be done faster and easier, with the aid of a TROY-BILT® Tiller.

Lay out aisles and rows in minutes with our Row Marker Attachment, and never bother with string and stakes again. Form your rows with very little hand raking, by creating Raised Beds or Wide Rows with the Tiller and the Hiller/Furrower Attachment.

Planting furrows are cut with the Hiller/Furrower...even, neat, and straight as a string, from one to six inches deep.

Drop seeds by hand, as always. You can try Speed Planting: our method of broadcasting seed over a block of ground, then tilling it in to germinate.



No-Hoe Potatoes when you open and close the furrow mechanically.



Wide Row planting is extra fast, because you broadcast seeds instead of placing each one.



Transplant young tomato plants quickly, when you lay them horizontally in a TROY-BILT® Tiller trench.

"When the season was over I got out my Pony and really went to work..."

"For years I had been trying to get a garden by hand, with not much success. Then I came up to Troy, NY and bought a PONY with a Hiller/Furrower Attachment. My garden was already in by that time so I couldn't do too much with the Tiller, but when the season was over and the crops had been picked I got out the PONY and really went to work, tilling under the plant residue. I got leaves and lawn

clippings and added it into the garden as I read in your books and papers. Then I bought rye grass for a cover crop and covered it.

This year my plot is one of the best-looking gardens around, and I say it proudly because not only is the garden weed free but the crop is big, beautiful and healthy.

*Anthony Capuano, Sr.,
Callicoon, NY*

Turn even problem soils into great garden spots!

Few gardeners are blessed with perfect soil. Typically, garden spots have the shortcomings of too much sand, clay, rocks, or wet spots. At last, you can make major improvements to poor soils, with a TROY-BILT® Tiller, imagination, and a little know-how.

Solve soil problems with Raised Beds. Your garden may be wet, filled with clay, slow to warm, or have skimpy top soil...but Raised Beds will make a tremendous improvement because they double the depth of skimpy top soils, and they shed excess moisture.

If your ground is hilly and steep, you can make your own nice, flat garden spot. With the TROY-BILT® Tiller, you can terrace hillsides into level gardens that won't wash away in a rain storm.

Weed-infested soil can be tilled weed-free. Stones up to fist-size don't faze the Tiller, and it kicks out the larger ones so you can remove them easily. Clay soil, sandy soil...both can be amended.

If your area is prone to drought, build the insulating value of your soil by tilling in plenty of organic matter... and plant in furrows.

If your property is of any real size, you'll run across landscaping jobs from time to time. Our PTO Horse Models push a rugged Dozer Blade that will level gravel, grade a new lawn, move soil or a foot or so of snow.

"I could hardly believe it was the same soil!"

We live in an area which has very hard clay soil and needs gypsum and organic matter added badly. Last fall I tilled under gypsum and all of the grass clippings I could get my hands on and this spring when I tilled it up to plant my very first garden I could hardly believe it was the same soil!

Nobody should mind paying a little more for a good product which is built to last. I expect my Tiller to last twenty years and that will make it a very cheap investment.

Ken Cardwell,
Mulvane, KS



Make Raised Beds to overcome major soil problems by doubling the depth of your topsoil.



Terraced hillside gardens are easy to create, easy to maintain with a TROY-BILT® Tiller.

So much easier than a shovel, the Dozer blade moves soil, gravel, snow.

Regular cultivation ends hand-weeding.

You can virtually eliminate weeds with a TROY-BILT® Tiller. All you do is space your garden's aisles to accommodate the Tiller, and walk it up and down—barely scratching the surface—on a weekly basis.

It will “hoe” standing weeds, but it does something far subtler and more effective: stirring the top inch or two of soil shocks and kills tiny, just-sprouted weeds. It buries some weed seeds too deep to germinate. Others die of exposure when brought to the surface.

Use the TROY-BILT® Tiller to eliminate weeds in several situations. Weeds between rows are killed by shallow tilling in the aisles. Or, in hot, dry weather, use the V-Sweep Cultivator Attachment to skim just under the surface; it doesn't stir the soil, so it helps retain moisture. Weeds between plants like corn, potatoes and beans are controlled by hilling. Hill automatically with the Hiller/Furrower Attachment, instead of a hand hoe.



Hand hoeing is reduced when you cultivate your rows with a TROY-BILT® Tiller.

“What a mess...!”

In August I had 30 trees removed from my front yard. What a mess! But after a few passes with my TROY-BILT® Tiller, it started to shape up.

Once it was all leveled, I used my Hiller/Furrower Attachment to help me lay over 600 feet of poly pipe for the lawn sprinkler system. My front yard is 60' x 130', and thanks to my TROY-BILT® Tiller I got the lawn seed in by mid-September. During this time, I also prepared two other lawns with my Tiller for which I made \$100 for about four hours work!

In the latter part of September my wife and I decided to clear some ground for a garden for next year. It turned out that on the 40' x 100' piece we selected there were four big stumps which we had to remove. Once again, we had a mess but a few passes with my TROY-BILT® Roto Tiller and my garden started to take shape!

I've been tilling under leaves and manure, and hope to have a very prosperous garden this year.

Dominic Bratta,
Ronkonkoma, NY

Succession Planting means maximum production all season long.

No well-run factory would stand idle after its first production run...and your valuable garden space shouldn't be out of production, either.

Succession Planting means replanting a new crop in the space occupied by a first planting...as soon as that first crop is done bearing.

For example, 90-day corn will

occupy the same space all season. But there's no reason 50-day spinach can't be followed by 60-day beans...giving you two successive yields from the very same garden space.

Plan each row so its crops mature at about the same time. When they've gone-by, just till them in. After a few days, they'll have returned their nutrients to the soil, and you're free to put in your Succession Planting.



By mid-season, some crops are finished. Till them in, get two crops in one season!

A rugged Power Composter works miracles in any soil.

Besides tilling, a garden machine should also be able to build your soil. The TROY-BILT® Roto Tiller/Power Composter not only tills; it uses its tremendous power to turn organic matter directly into your soil, where it becomes soil-enriching, natural compost.

There is hope for even the poorest soils.

Is your garden soil dry, dusty, hard-packed, or can you dig it by the double handful; rich, deep, moist and musky-scented? The former, unfortunately, is the state of most garden soils, simply because they don't contain enough organic matter. The latter is typical TROY-BILT® Tiller soil—vitalized and energized by rich doses of organic matter, year after year.

Organic matter is the single cure-all for most problem soils. Gritty sandy soils are "glued" by matter between the particles. Sticky clay soils are "loosened" by matter between the flat, plate-like particles.

Organic matter feeds earthworms, microbes, and other soil organisms. As they feed, they transform elements which are



Organic matter improved the soil the zucchini plant at right was grown in. The skimpy one at left was stunted because its soil was deficient in that one essential ingredient.

essential to plant growth into a form the plants can access.

Organic-filled soil is healthy, weatherproof soil. It holds water in dry spells, sheds it in wet ones. Plants are fertilized naturally. They're resilient to attack from pests and disease. Air and light can get in, so plant roots can breathe.

Organic matter in your soil actually keeps your soil alive. It is essential to great gardening. It is the fundamental secret to TROY-BILT® Tiller gardening.

Gardeners have always been avid recyclers.

Landfills closing, acid rain, the greenhouse effect, and a universal need to recycle are common issues in today's news stories. Yet for centuries, gardeners have practiced recycling by turning natural materials back into their garden soils.

Instead of throwing away organic materials, gardeners bury them in their gardens, where they decompose and recycle their nutrients into the soil, into other plants.



Electron Microscope photos of soil show loose grains in a sandy soil (left). No wonder water pours through! The same soil (right) with organic matter, binds particles together, so soil retains moisture, nutrients.



All this organic matter will soon be deep in the soil, feeding organisms, adding nutrients, improving texture.



Set aside a trench to receive kitchen scraps. You'll make fewer trips to the landfill, and get better soil in the bargain.

A TROY-BILT® Tiller helps you recycle.

Recycling in your small garden won't solve the ills of the world, but it is satisfying, and the morally right thing to do, to take personal responsibility for dealing with the wastes created by your household. A TROY-BILT® Tiller makes it easy, because it chops and buries materials in one simple step.

Grass clippings can be used as mulch in walkways (as long as you haven't applied herbicides), then tilled in at season's end. Leaves by the truckload can be turned in, and thus kept out of landfills.

There's no such thing as too much zucchini, because gone-by crops and garden left-overs can return to the soil to feed next year's plants.

Kitchen scraps (except meats) can be Trench Composted by tilling a deep furrow, dumping in scraps a few feet at a time, and backfilling with a hoe. Sheet Compost by spreading wastes (like manures or pea hulls) over a wide area and tilling them in.

Home Gardening isn't the whole solution to the Landfill Crisis...but it's a pretty respectable start.

The statistics are startling: a third of the landfills in the U.S. will be full within five to seven years. Up to 18% of the household trash in landfills is yard waste — leaves, lawn clippings, brush, etc. In peak yard waste season, that figure jumps to 50%! America definitely has a landfill problem.

We as individuals can make a difference.

We've heard a slogan recently: "Think globally, act locally". The idea is each person should have the earth's environmental problems in mind...while taking action toward a solution at our own personal level.

Recycling may well be the answer. And home gardeners are far more experienced and open-minded about recycling than most Americans because

gardening relies heavily on returning nutrients to the soil.

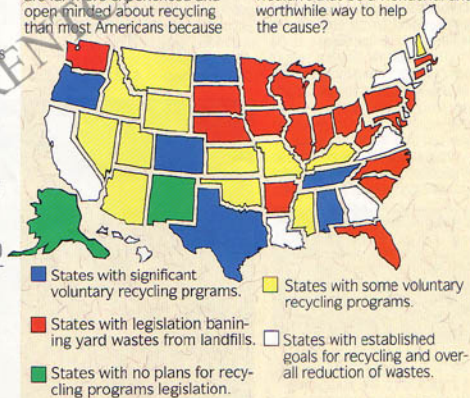
Here are our suggestions on how we gardeners can act locally to impact our global crisis:

- **Recycle lawn clippings as mulch** in your garden's aisles. Till fall leaves into your garden soil. Recycle spent crop residues by tilling them as they stand.

- **Ask your neighbors** to give you their bags of clippings and leaves. They'll get a lesson in recycling, you get organic matter for free.

- **Support local recycling programs.** As new programs spring up, each will need support from experienced recyclers.

- **Talk up gardening.** Even if you encouraged just one other person to become a gardener, wouldn't that be a wonderful and worthwhile way to help the cause?



Virtually every state has a plan for recycling organic matter. Many ban these wastes from landfills.



Green Manure Cover Crops are free fertilizers!

Would you like to know the easiest and cheapest way to pump your soil full of organic matter? Carry a bag of seeds into your garden, broadcast them, Speed Plant them with the Tiller, wait a few weeks, and till in the resulting Cover Crop. (It would take several trucks to haul in as much organic matter as you can grow with just a bag of seeds!)

We call this "Green Manure Cover Cropping". Green because of the color; Manure because it adds nitrogen and organic matter. And Cover Cropping because it covers a large garden space and protects it from erosion and weed infestation.

The benefits of Green Manure Cover Cropping are substantial: they grow close so they shade out weeds. They grow quickly, so you get two, even three crops in a season. All improve the soil; some "fix" nitrogen from the air and impart it to the soil. Some even yield a bonus by producing an edible crop.

The easy-pickings are a bonus when you grow legumes as a cover crop.

Grow your own fertilizers when you sow Green Manure Cover Crops to improve your soil.

Here are our favorites: Buckwheat grows fast and tall, even reseeds itself. Peas and beans (soybeans, wax beans, etc.) are edible. And because they're legumes, they "fix" nitrogen. Annual rye grass insulates soil over winter, and it won't reseed.



"I till in all my compost material..."

I have used my Tiller two or three years now and I wouldn't part with it. I till in all my compost material. I also use all our newspaper and scrap paper — which I shred — to till into the garden. Using newspaper produces prolific amounts of night crawlers as well as vegetable produce. It helps the soil hold moisture and keeps it loose and aerated.

*Frank Hossenlopp,
Amherst, NY*



Fall leaves are a gold mine of free nutrients.

Leaves are a miracle material that opens and enriches your soil, contains more than twice the nutrients of other natural fertilizers like manures, and draws essential soil organisms like a magnet. Best of all, they're yours for the raking, every fall.

Fully decayed leaf mold is pure humus; that's why the forest floor is always moist and sweet. You can do the same for your garden by tilling in fall leaves. Just dump them up to six or eight inches deep all over your garden, set the Tiller to till deeply,

and make several passes.

By planting time next spring, the leaves will have totally decomposed. They'll add their essential nutrients and improve soil tilth greatly...for free

Leaves feed the organisms that feed your soil.

When leaves are incorporated into your soil, soil organisms arrive and begin to feed almost immediately. The decomposition process will "lock-up" nitrogen for a time...but you'll be ready to plant come spring, especially if you heat things up by adding extra nitrogen in the form of manures or other "hot" activators.

Once you see the benefit leaves give, you'll welcome bags of leaves others can't get rid of. Perhaps you'll ask puzzled neighbors to drop off their raked leaves. Another man's "trash" is truly your treasure!

Trees mine nutrients from deep down.

Don't waste nature's goodness; use it instead by tilling leaves into your garden soil.

Each fall, a new crop of leaves falls to earth bearing all that free fertilizer.

These nutrients are utilized by the tree in its growing process.

Deep-reaching tree roots absorb minerals and nutrients from deep in the subsoil.



A six inch layer of leaves is no challenge for a TROY-BILT® Tiller!



If you're going to spend the money, why not get a machine that earns its keep outside the garden, too?

A Power Landscaper with whole-yard utility.

A TROY-BILT® Tiller is America's very finest garden Tiller. But it's also much more besides. Our Tiller performs a host of tasks *outside* your garden, all over your whole property. With the aid of our versatile workhorse's power and capability, you can do a wide variety of tasks faster and easier than you've ever done before.

Yard care can be a rewarding pleasure.

Most homeowners have a desire to keep their properties well-maintained and handsome. Average homeowners think of yard maintenance, landscaping, land improvement as a grinding chore they put off just as long as they can...or they hire someone else to do it.

But we TROY-BILT® Tiller Owners are just a bit different. TROY-BILT® Tiller Owners *enjoy* the work. We derive pleasure from having the tools we need, and doing it ourselves.

A TROY-BILT® Tiller will put in a new lawn, or renovate an old one; after all, your yard is a garden of growing things, too. Till the soil thoroughly, and add amendments like manures and lime. Spread seed, roll the surface, and water thoroughly.

Decorative flower gardens are easy. Prepare the soil as you would any garden. If it's odd-shaped, or curving, just maneuver the Tiller to follow the contour. Many of our Owners are vegetable and flower gardeners, too.

Could you use some grading? Hilly properties can be made more usable if you bring in a few loads of fill and spread them



Renovate a lawn the easy way, by tilling and grading it with a TROY-BILT® Tiller.

with the Dozer Blade. Even flat properties can usually use a little filling of dips and low spots.

"We terraced an acre-and-a-half orchard with our TROY-BILT® Tiller..."



Enclosed are photos of various stages of the terraced portion of our orchard.

The soil was filled with gravel and larger river rocks. I think it is an underestimation to say that the Tiller has thrown up several tons of rocks over the past six years.

The trees were the size of pencils when we first put them in the ground. During the first couple of years we grew extensive stands of native California wildflowers on the terrace faces, not to waste a square inch of the garden space. We sold a couple



hundred dollars worth of wildflower seed on our landscaping jobs, and we still sell that much each year just from the wildflowers which come up as "weeds" in the garden!

I just wanted you people at TROY-BILT to know that there is one garden in California which has given a lot of people happiness and a good slice of life, and a customer who is very grateful indeed for the quality of both your roto-tiller and your business philosophy.

*David Cavagnaro,
Santa Rosa, CA*



You're in charge with power when you need it, as you need it, with the TROY-BILT® Generator.

Versatile enough to be used outside the garden, too!

Because it has PTO (Power Take-Off), the TROY-BILT Tiller is in an entirely different class from most garden tillers; it's a whole yard maintenance machine! Like large, agricultural tractors, our tiller has

reliable, professional quality, shaft-driven PTO. (Many lawn tractors have less durable belt-driven PTO.)

Now you can become your own power company, when you add the TROY-BILT® Generator. You'll have remote power for work beyond a convenient electrical source...and emergency power whenever - and wherever - you need it! Simply remove the Horse Model's tine section by loosening two bolts, install your attachment, and power-drive away to do your job with ease!

NEW! TROY-BILT PTO Chipper/Shredder Attachment.

We've built America's best-selling homeowner Chipper/Shredder since 1984, so building a PTO Chipper/Shredder attachment for the TROY-BILT® Tiller was a natural. Like our

rugged TOMAHAWK® Chipper/Shredders, the new PTO Chipper/Shredder features a heavy flywheel for smooth momentum, a tough steel chipper blade to chip limbs up to 3"-thick, and a wide shredder hopper for accepting up to a bushel of leaves at a time.

Now you can use your tiller's PTO power to turn fall leaves into potting soil almost instantly! Reduce tough crop residue to 1/13th the size for faster decomposition. Turn unsightly brush piles into attractive wood chips to beautify trees, shrubs and flower-beds for a "professionally-landscaped" look. The list is endless!





Try these 9 time and work saving tips from our TROY-BILT® Tiller "Great Gardens System"!

Our Tiller makes gardening techniques simpler.

Every gardener has tricks, tips, and suggestions for growing a better garden. In that, we're no different from you. It's just that we at TROY-BILT Manufacturing have had years of hands-on experience gardening with a wonderful and powerful machine.

In that time, we've tinkered, experimented, documented, and staked our reputation on coming up with ways to perform common (and not-so-common) techniques easily. A TROY-BILT® Tiller will make much of the hard work of gardening disappear...while the pleasure and success actually increase.

We didn't invent these tricks; just made them practical.

If you're a dedicated gardener, you'll be familiar with some of the techniques that follow. What's new is that with a TROY-BILT® Tiller, virtually every garden job becomes simpler, quicker, and far more productive.

At last, you'll find an easier, faster way to harvest twice as much from the same garden space...stretch the growing season on both ends...double the depth of your topsoil...and much more besides.

We share these secrets with you freely, and we invite you to give them a try. We promise they'll overcome the very prob-



Raised Beds solve many soil problems and they're easy to make, with the powerful TROY-BILT® Tiller.

lems that limit your gardening success. And even if you don't purchase a TROY-BILT® Tiller, you'll be a better gardener after reading these pages.

1 Raised Beds will revolutionize the way you garden!



Carrots get stunted, malformed (left) in hard or rocky ground. Raise your beds to grow them long and straight (right).

Is your topsoil so shallow, you can't grow a straight carrot? So clay-filled, that it never seems to dry out in spring? So heavy, that it packs hard as rock? Is your area famous for drought or flood? Or do you have the problem—pain upon repeated stooping, soreness in your arms, back, knees after a day in the garden?

Well then, welcome to TROY-BILT Raised Bed Gardening: the simple solution to all these problems and more.

Instead of gardening "on the flat", you simply take soil from what will be the aisles, place it on what will be the rows, rake things evenly, and get ready to plant. That makes your planting area higher and deeper, and is a wonderful improvement for gardening in clay soils, rocky soils, thin topsoils, and more!

There are two ways to make Raised Beds. Hoe and rake them by hand (obviously, that's the hard way)...or create them with the TROY-BILT® Tiller and its Hiller/Furrower Attachment (that's the easy way).

Double the depth of skimpy topsoils.

When you make Raised Beds, you actually make your topsoil twice as deep. This helps grow fine root crops. Since there's more surface area exposed to the weather, the soil warms up earlier; clay soils become plantable sooner, and heat-loving vegetables thrive.

Grow the longest, straightest carrots in the loose, deep soil of a TROY-BILT Raised Bed.

Raised Beds start out loose and aerated, and they stay that way because they never get walked on. That means your plants can breathe; air is as important to a plant as water.

In normal conditions, plant on top of the Raised Bed. But if you expect a drought, you might plant in the furrows *between* Raised Beds for shelter from sun and drying wind.

And as for your aching knees and back...you'll kneel, stoop, and lift a little bit less if you use Raised Beds. The reason is simple: the plants are higher up, closer to you, the gardener.

And as if that's not enough, Raised Beds *also* discourage disease and rot...are easier to tend...control erosion on slopes ...and they just plain look well-managed and beautiful!



A bountiful harvest is easy to produce with Raised Beds and the TROY-BILT® Tiller.



Till then cut furrows with the TROY-BILT® Tiller and its Hiller/Furrower Attachment.



Rake the tops smooth; a Raised Bed can be from one to two feet wide.



Plant as usual, two or three single-file rows to a Raised Bed. Or Wide Row plant the whole Bed.

2 Double your harvest with Wide Rows.

Are you wasting garden space? You are if you place seeds one-by-one, side-by-side in single-file, narrow rows with wide aisles in-between. That may be the way many learned to garden, but there's now a faster, easier, and far more productive way, thanks to TROY-BILT® Tiller Wide Row gardening.

Wide Row growing makes your garden space more efficient, because far more of it is in production. There are fewer walkways, and densely-planted rows are more like blocks, because they're a full two, three, or four feet wide!

Put more garden space into production.

Naturally, yields are higher, because there's simply more growing per square foot. In our experiments, we've documented double, even triple yields using Wide Row methods.

By planting densely over a wide area, you actually double or triple the harvests. But that's not the only benefit.

Planting time is reduced, because you broadcast seed. Weeding time is lessened, because close-grown crops shade out weeds. Watering is reduced, because the same shade holds moisture.

13 heads of lettuce in just 3 square feet.

The biggest benefit is the increased yield: 13 heads of lettuce in less than three square feet. Four times as many onions. Carrots by the double-armload. Peas, spinach, mustard, beans... many crops pay extra-big dividends when planted this way.

Here's how to do it: Build up rich soil by tilling in organic matter with the TROY-BILT® Tiller. Till yourself a perfect, deep and smooth seedbed.

Mark out rows; two, three, even four feet wide. Sprinkle seeds freely and evenly over the entire area. Cover them by raking soil from the walkway...or try Speed Planting by setting your Tiller on "shallow" and running over the Wide Row.

Firm the seeds in by tamping with the face of a hoe, insuring good soil contact, and increased germination.

Then (and this is important) when the seeds sprout, drag a rake across the surface. It seems cruel to thin out a third of your young plants...but the ones that remain will need the space to mature. This final raking kills many sprouting weed seeds, too.

Or, instead of broadcast planting, make two or three long, single rows on your Wide Row. All the Wide Row growing benefits apply, and these close-planted single rows are easy to weed by running a hoe between them.



Place transplants in a pattern on a Wide Row so they'll touch leaves when mature. Easy to weed when young, virtually no weeding when they grow larger.



Twice as much produce from the same space, because Wide Rows put more garden space to work.



Groom between Wide Rows by cultivating with the Tiller. Much more garden space is in production than ordinary single-file rows.

3 Plant perennials easily with a TROY-BILT® Tiller.

A wise gardener grows perennials because you get years of gourmet-quality produce, or beautiful flowers, from just one planting. Using a TROY-BILT® Tiller, it's simple to plant quickly and easily.

Pick a suitable home for perennials, with good slope, sun and soil. Build the quality of your perennial beds a season or two before you plant by growing and tilling in Green Manure cover crops and other organic matter. Go on a regimen to wipe out weeds for good, with the TROY-BILT® Tiller.

There are hundreds of varieties of perennials, and specific planting and care varies with the type of plant. We suggest you consult your local garden center or a good gardening book for specific instructions.

But all perennials share a preference for being planted in good, deep, well-prepared soil... such as the planting bed tilled by the TROY-BILT® Tiller. Some perennials — such as asparagus and rhubarb — need to be planted deeply in trenches. You'll find making a trench is quite a simple matter, with a TROY-BILT® Tiller.



Start right with asparagus by making a deep TROY-BILT® Tiller trench. Bury compost or manure deep below the root level, cover with mounds of rich soil. Spread plant stock roots like a wig on a head, cover with more rich soil. Water, wait, enjoy!



It's reassuring to know what's on (or in) the foods your family eats; nothing more or less than you put there yourself, if you're a gardener.

4 Super-charge your soil for your greatest ever gardens.

In recent years, Mother Nature has been heavy-handed playing her tricks on gardeners. One summer's parched, dry weather withers plants; the next one's torrential rains drown them.

You can defend your garden against too-wet or too-dry conditions with one simple technique and help from the TROY-BILT® Tiller.

The technique, of course, is to fill your soil with organic matter. Soil that's so amended is naturally rich in nutrients that help plants survive. It has insulating value to nurture plants through high heat.

Organic-packed soils are "Super Soils"!

When you till organic matter into your soil, you give it the remarkable capacity to hold just the right amount of water. If conditions are dry, organic-rich soil retains moisture like a wet sponge. In wet times, the same soil will shed excess water, because it's open and porous.

The TROY-BILT® Tiller is exceptionally good at filling soil with organic matter, Power Composting it deep into the soil to decompose.

Overcome extreme weather conditions.

Many of our southern Owners report they make Raised Beds and plant in the furrows, to conserve moisture. Some plant on the Raised Beds, and fill the furrows with mulch to slow evaporation.

In dry seasons, spread mulch around plants, to hold water. Work early in the day, turn the soil as little as possible...and when you water, water deeply.

Wet seasons are more difficult. Use Raised Beds to keep plants from getting "wet feet". Best to stay out of the garden when things are too wet; your footsteps compact soil, and you can inadvertently spread molds and diseases. With a TROY-BILT® Tiller, you really *can* do something about the weather!

Increase soil quality...the 100% natural way.

Chemical fertilizers stimulate quick plant growth, but add no long term benefits. Adding organic matter aids fertility naturally... *and also* increases tilth, insulating value, and ability to hold water. Further...healthy, organically-enriched soil yields healthy plants; plants that largely resist the attack of bugs and disease.

We advocate using a planting schedule that misses the largest population of pests. For example, planting cole crops (cabbage, broccoli, kale, etc.) in time for a fall harvest, misses much of the cycle of the Imported Cabbage Worm. Hence, extensive use of pesticides is not necessary.

5 Break the weed cycle for good.

Turn your back for a few days, and your neat garden rows choke with weeds, your vegetables are overrun, and you're overwhelmed. Where did the weeds come from...what can you do?



Eliminate weeds before they become a problem, with frequent, shallow cultivation.

To beat a weed, learn how it grows.

Annual weeds spread by seed. If you simply get out there and stir the soil by running the Tiller between rows every few days, you can kill the weeds before they ever go to seed.



Perennial weeds have durable root systems that store energy and send up new growth when the above-ground portion of the plant is destroyed. Some of them spread by underground stems (rhizomes) as well as seed, and these are especially hard to get rid of.

To conquer perennial weeds with the Tiller, use early, frequent cultivation to prevent seed formation and chop up rhizomes. Each rhizome part is capable of regenerating a weed. But just keep at it: every time a chopped rhizome sprouts, it uses energy. If you cultivate repeatedly, it will eventually weaken and die.

Every garden soil contains millions of tiny weed seeds, above, below, and within their viable "Germination Zone".

Till shallowly, just before planting; it's your last and best chance to set back weeds so your vegetables can become the dominant species in your garden.

Tilling on planting day "fluffs" soil so weed seeds aren't in firm contact; hence, they can't germinate. When rains and gravity eventually firm them into your garden soil, your vegetable plants will already have had a two to three week head start.

Weeds are a blessing if you till them in before they go to seed; they add organic matter like any plant.

Once weeds germinate, shallow tilling cuts root hairs and shocks them into an early demise. It buries some weed seeds too deep to germinate, and raises others too shallow to grow.

Plan on tilling an inch or two deep, every three to five days. You'll eliminate this season's weeds before they're a problem, and, over time, you'll reduce the total population of weed seeds in your soil.

6 Six quick tricks for too-busy gardeners.

Gardening and timeclocks just don't mix. The soil and the plants will be ready when they want, not when it's convenient for you. So what do you do if you truly love to garden, but have trouble fitting one into your busy schedule? Here are six tricks to try:

- 1) Grow a smaller, more efficient garden.
- 2) Till your soil instead of hand turning it.
- 3) Choose easy-care varieties, like low-growing peas, or bush cucumbers and tomatoes that don't need plant supports.

4) Speed-Plant with the Tiller (broadcast seed and run the machine over while tilling shallowly). 5) Plan your row spacing so you can cultivate with the Tiller. 6) Till gone-by plants back into the soil as soon as they're done bearing. Your garden will look neater, and that helps satisfy the part of you that just wants to have the satisfaction of managing a garden.

Have you got just 10 minutes a day? You can have a super-efficient garden!

Even if you love to garden, it can be hard to find the time in a busy week. Here's a plan from Mark Hebert, our Master Gardener, designed to be big on efficiency...and small on time required.

Plan on spending 10 minutes daily, rather than letting the whole garden go all week. You'll save your Saturday mornings! Monday, cultivate ROW 1; it should take about 10 minutes. Tuesday, do ROW 2, and so on.

By mid-summer, you'll be spending 10 minutes daily picking...and much more time enjoying!



7 Succession Planting grows "baby" crops all season.

Why should you content yourself with fresh, tender, young salad greens *only* in the spring? You can have a succession of new crops all through the season...easily!

The idea behind Succession Planting is to never let your soil stand idle. That's when weeds take over and Nature erodes away your topsoil.

2-3 harvests a season, from the same garden space!

Even if you live in the coldest parts of our country, you can have a doubled-up crop of two plantings of 40-day beans, two and even three plantings of lettuce, beets, mustard, and more.

We didn't invent the idea, we just made it practical. When a crop goes by, just turn it in with the TROY-BILT® Tiller, and replant a few days later. It's interesting and challenging to plan things out so you get a double-crop. Here's a trick we learned: no matter where you

Youngest crops are tenderest, and you can have "baby" plants all season, if you till out spent crops with the TROY-BILT® Tiller, and replant in the same space.

live, think of July 4th as your season's mid-point. Choose varieties that mature before the 4th, so you can quickly replant a vegetable that matures in about the same time.

Just be aware the days get cooler and the length of daylight changes toward fall; plants mature more slowly in September than they do in May.

8 End the season the right way by adding tons of organic matter.

We call fall "The 90 Most Important Days" in the life of your garden. It's your chance to pump in a ton of easily-accessible organic matter, bury crop residues so they don't become a winter haven for garden pests, and insulate your soil for a fast start next spring. Finish the season by putting your garden to bed the right way!

ROW 5	POLE BEANS		CORN CORN CORN CORN CORN
ROW 4	POMATOES		CUCUMBERS
	PEPPERS		S. SQUASH/ZUCCHINI
ROW 3	BROCCOLI	CABBAGE	CALIFLOWER
	PEAS FOLLOWED BY BEANS		
ROW 2	ONIONS		
	BEETS		CARROTS
ROW 1	LETTUCE	SPINACH	CHARD
	DILL	BASIL	OREGANO PARSLEY

TROY-BILT® Tiller 10-Minute Garden Plan (20' x 25')

First, Power Compost all garden residues deep into the soil. It's "trash" to you, but it's fuel mignon to hungry earthworms and soil organisms.

Then, sow a fast-growing Cover Crop. (We like Winter Rye in our northeast location...your local Cooperative Extension can make a good suggestion for your area.)



A late-sown Cover Crop "tucks in" your garden with a nice insulating blanket you turn under in spring.

Your soil benefits now...and later.

Cover Crops insulate the soil, so decomposition of crop residues continues well into winter. If you sow it thickly, weeds can't compete. Roots mine deep in the soil for extra nutrients. Come spring, many crops resume growing automatically, giving you a double crop of organic matter to till in.

Or, (instead of a Cover Crop) till in a four to six inch layer of fall leaves. Leaves impart nutrients retrieved from deep in the soil by trees' deep-searching roots. They add humus to soil as they decompose over winter, yielding a wonderful, crumbly, light texture. The TROY-BILT® Tiller Child's power composts them easily... and, best of all, they're free!

9 Give the gift of gardening to a child.

It doesn't take much to fascinate a young child and sow the seed of a lifelong love of gardening. Your own children, your grandchildren, or perhaps a special neighborhood youngster may remember you always as the one who showed them the magic of growing things.

Children of three or four are old enough to garden, but you've got to keep it simple. Choose vegetables and flowers that reach maturity early; radishes, scallions, beans, for instance.

Choose crops that are sure to please.

If they're particularly fond of a certain vegetable, you'd be remiss not to have them plant it.

And don't forget the show-off plants: pumpkins and watermelons impress even oldsters with their spreading tendrils and huge fruits. Sunflowers are wonderful.

Plan a small plot: four by eight is plenty! Let them watch you till it from a safe distance, and let them place the seed. Mulch the plants; weeds aren't much fun. Through the season, take your children into the garden with you, and tell them interesting bits about how plants grow.

You'll have a "little helper" for the summer, and you'll find your own pleasure increasing because of the company.

TROY-BILT® Tiller Child's Garden Plan (4' x 8')

CUCUM (TRELLISED)			
LETTUCE	AND	RADISH	ROW
TOMATO		TOMATO (CHERRY)	
BEANS (GREEN)		BEETS	
BEANS (YELLOW)		CARROTS	
ONION SETS			
MARIGOLD		PARSLEY	CHIVE

Kids get excited about crops like these...

It's easy to get excited with crops that start fast, are hardy, or just simply get *huge!* Try these: radishes, lettuce, beans, beets, carrots, onion sets, pumpkins, corn, watermelon, cucumbers, chives, parsley, tomatoes, sunflowers.

Make your child's first garden a success...

Till the soil well while your child watches from a safe distance. Let children choose crops they'll plant, and plant on a small scale. Plant in blocks, and use frequent cultivation or mulch to keep the weeds down. Let the child pick the produce...and watch the awe in his or her eyes!

The object here is connectedness — to the earth, to the soil, to each other. Vegetables are just the catalyst for this special kind of closeness.



More shortcuts to Great Garden Success, from our own Master Gardener.



Our in-house Master Gardener, Mark Hebert has years of experience with growing things...and doing it successfully with the TROY-BILT® Tiller.

Mark Hebert is not your average TROY-BILT® Tiller gardener. He uses a TROY-BILT® Tiller, all right, and has for years (ever since his father bought one to help with the large garden that kept the five young Heberts in fresh vegetables). But for most of us, gardening doesn't become a vocation as it has for Mark.

Mark began his gardening career early, as a boy in a market-growing area near Burlington, Vermont, picking beans for a quarter a bushel. He's gone on to many other activities since—super-
vising test gardens for Garden Way, training Garden Way employees in the use of TROY-BILT equipment, and appearing as gardening expert on the "JOY OF GARDENING" TV series. He's a garden writer and photographer, a beekeeper, a tireless tinkerer, and, above all, an ambassador for gardening, always ready to share his knowledge with others.

Q. Mark, what kind of equipment have you used in your gardening life?

A. Over the years I've used just about every garden tool you could think of. I started out as a boy, with a lot of hand digging and hoeing which I didn't enjoy very much. My father planted a big garden each year and it was my job to help him keep the weeds down. That was always a fight, and toward the end of the season, the weeds always seemed to come out ahead. He finally bought a TROY-BILT® Tiller when I was ready for college. I'll never forget the first time I got to use it...what a welcome change from hand tools!

Since then, I've used all sorts of power equipment from manufacturers around the world. I've developed some pretty strong opinions about what a gardening machine should be, but I think my first reaction to the TROY-BILT® Tiller was right: This really is a better way to garden.

Q. What kind of jobs do you expect a tiller to handle?

A. A rototiller should be versatile enough to take on a variety of gardening tasks with ease. I want to use it for everything from initial soil preparation, to making planting furrows and raised beds, to cultivation, to turning under crop residues at the end of the season. It's a lot to ask, but that's what you buy a piece of power equipment for—to make tough jobs easier.

Q. Out of all the applications you demand of a tiller, which would you say is Number One?

A. Definitely, soil improvement! The single most important thing you can do for your garden is to add organic matter to the soil. It's the key to healthy soil life and the ideal conditioner—whether you have sandy ground that doesn't hold water and plant nutrients, or tough, tightly packed, unworkable clay.

The time-honored method of getting organic matter into the garden is by piling up leaves, grass clippings, kitchen scraps and so forth, letting it all decompose, and applying the product to the soil. I wouldn't be without a compost pile myself, because finished compost is the ideal material for so many purposes—to put around the roots of transplants, for instance. But it's very difficult to improve the soil of an entire garden by means of pile composting.



Gardening's a way of life for the Hebert family; Mark's son Christopher got his gardening start a few years back at TROY-BILT's test gardens in Vermont.



Compost is a perfect mulch material for transplants, because it enriches the soil while it keeps the weeds down.

That's why the Tiller's Power-Composting ability is such a tremendous advantage. The machine is designed to chop plant material and mix it into the upper level of the soil, where microbes work to decompose it. Your whole garden becomes an active compost pile, and you can make a real difference to your soil in just one season.

Q. So owning a TROY-BILT® Tiller opens up soil improvement options that aren't readily available otherwise?

A. Absolutely. When you break new ground, for instance, you can till in the existing vegetation and let it decompose in the soil. When a crop is finished, you can turn it under instead of pulling the plants (and if you had an organic mulch on it, you can till in the mulch, too). You can plant unused areas of your garden in Green Manure Crops, and till them under—a wonderful way to add a large volume of organic matter with a minimum of effort.

Fall is an especially good opportunity for soil improvement with the Tiller. You can put your crop residues—even cornstalks—into the ground, and follow up by spreading leaves on the garden to be tilled in also. The material will have time to decompose considerably over the

winter, and you'll be pleasantly surprised at the difference you see next time you work that soil.

Just try doing any of those techniques by hand, or with a machine that wasn't designed for power composting! I have, and, believe me, it's an instant education in the advantage of having the right equipment for the job.

Q. What's the secret of the TROY-BILT® Tiller's Power Composting ability?

A. The tines are the business end of a tiller, and it's tine design that makes the real difference in power composting. TROY-BILT® Tillers have bolo-style tines that efficiently chop vegetation and mix it into the soil without becoming hopelessly tangled. It sounds like a small thing, but it's one of the features that separate an okay tiller from a TROY-BILT® Tiller.



TROY-BILT® Tiller tines neatly "knife" through the soil, and shrug off vegetation without unbearable tangling.

Q. Is there anything else you absolutely demand in a tiller, apart from versatility and the ability to do a good job of soil improvement?

A. In a word—dependability. I'm a busy guy, and unfortunately I don't have as much time as I'd like to spend in my garden. I need a tiller that works well every time I start it up. I really enjoy my gardening, and I couldn't accomplish what I do, or take such pleasure in it, without my TROY-BILT® Tiller.

Mark Hebert's 12 Commandments of Gardening:

- 1) **Make a Garden Plan** — involve the family in the planning. You'll have more success and greater enjoyment...guaranteed!
- 2) **Improve the Soil** — adding organic matter to any soil is the single most important thing you can do for your garden.
- 3) **Try Raised Beds and Wide Rows** — these simple techniques solve common soil problems, increase yields 2-3 times!
- 4) **Maintain pH** — a pH range between 6.5-6.8 will produce the widest variety of vegetables, flowers and fruit.
- 5) **Plant What You Like** — gardening should be fun, so plant the things you like and experiment to discover new favorites.
- 6) **Water Deeply** — when you need to water, soak the soil to a depth of 6' or more to encourage a deep, healthy root system.
- 7) **Control Weeds** — weeds steal sunlight, moisture, nutrients. Stir the soil regularly so weeds can't germinate.
- 8) **Prevent Insect Damage** — healthy soil, good garden sanitation and early control work to prevent most insect damage.
- 9) **Plant Succession Crops** — Keep your garden productive by re-planting a second or even a third time in the same space.
- 10) **Harvest Regularly** — regular picking ensures you'll enjoy maximum production and top quality vegetables.
- 11) **Turn Under Crop Residues** — this keeps your garden tidy, reduces insect and disease problems, and enriches the soil.
- 12) **Start a Compost Pile** — composting yard and garden leftovers provides a ready supply of valuable soil conditioners.

TROY-BILT Tiller Owners are the greatest gardeners!

We have always had special respect for the gardening tips and tricks suggested by our Owners. After all, among their ranks are America's finest gardeners, who've made a serious commitment to gardening with

the best tools available.

We get letters from our Owners daily, telling us of hands-on tricks, tips, and suggestions for better TROY-BILT® Tiller gardening. Here are a few of our favorites, reprinted from the files of our "TROY-BILT Owner News".

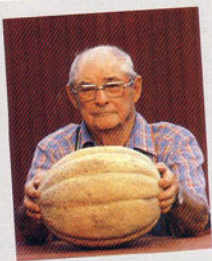
Lettuce in Winter

It's fun to have homegrown lettuce early. Last January, when I went to the store and saw the new seeds for sale, I wanted to plant some. Then I saw a flower bed on the south side of my brick house that wasn't frozen and was dry enough to work. I decided to go ahead, remembering a tip a professional truck gardener gave me long ago: he said you can plant lettuce as soon as the ground can be worked, because the temperature of the soil controls the sprouting of the seed.

On January 19th, about 35°F, I planted my lettuce, and on January 31 the plants were up in good numbers. On that day, the weatherman predicted very cold weather and snow, so I put a row of bricks around the edge of my lettuce bed, and laid an old storm window on it. We had several days of near-zero temperatures and about 10 inches of snow, but the lettuce plants continued to hold their heads high!

*Frank E. Schulte
Dyer, Indiana*

A man and his melon



J.S. Vogt, of Enid, Oklahoma, sent us this photo of himself and the prize muskmelon he grew last year. "My son Richard and I own a TROY-BILT HORSE Model in partnership," he wrote. "I am 81 years old, and I do the gardening on our 11,000 square feet. If we didn't own the TROY-BILT, I wouldn't be gardening. It keeps me busy in summer, but I enjoy it."

*J.S. Vogt
Enid, Oklahoma*



Organic Pest Control

My remedy for coons in the sweet corn is to plant squash or pumpkin vines all around the patch when the corn is planted. People laugh at me, but I say, "Try it!"

To kill ants, take your teakettle of boiling water and pour it on the ant mounds.

I never spray my fruit trees. Instead I take a plastic milk jug and cut a hole in the top, but leave the handle to hang the jug in the tree. The jug is half-filled with spoiled fruit and water. Banana peels work, or you can use a mix of vinegar, sugar, and water. Be sure to check weekly and clean out the dead insects. You'll be surprised how many you get.

*Mrs. Johanna Brusven
Cottonwood, Minnesota*

Scared of Hair

I want to tell you how we solved the problem of coons in our sweet corn. We asked our barber to save us some hair, and got a large garbage bag full. As soon as little ears formed on the corn and the ground was no longer being tilled, we threw the hair between the rows and all around the patch. I don't know whether it was the human smell or the tonic the barber puts on your hair, but the coons were scared away, and never bothered the corn.

*Mrs. Donnis Wray
Pamell, Missouri*

Yes, I "can" garden!



The photo shows part of my garden. I stake most of my tomato plants, but I put cans (mostly 1 lb. or larger) around all of them, and also around peppers, broccoli, and cabbage. The cans stop slugs and birds from cutting the plants, contain the water when I irrigate, and protect the stems when I hoe.

*Gerald C. Wimer
Norristown, Pennsylvania*

Building up dead soils: the thrill of creation!



We have heavy clay soil that's depleted of many ingredients necessary to have healthy plant growth. We use our TROY-BILT PONY* Model to work the soil, then lay a carpet of hay mulch between rows to prevent weed growth.

By fall, the hay has rotted somewhat. When tilled in with the PONY, it keeps the soil from washing away. We add manure to enrich the soil still further.

When one can work with nature to build up an almost dead soil into a thriving garden, the thrill of creation is beyond words to describe. To be able to feed fresh vegetables to five families, provide for the local food bank, and share with travelers on the road is really to know the joy of living. Our PONY Model is the one instrument that has made this all possible.

*Neil M. Higbee
Sedro Wooley, Washington*

Great Tiller Tomatoes

This photo shows one of our tomato plants and the TROY-BILT* Tiller we bought in 1977. After we had used the Tiller a few years, we could see a big improvement in our soil, since we just till everything in instead of pulling up the vines.

To plant the tomatoes, I make a wide, deep furrow and fill it with compost. Then I put fertilizer and lime on top and pull the earth from each side over it. Next I run the Tiller slow and deep to mix everything thoroughly. I make the rows four feet wide and three feet apart.

I support each plant by means of two stakes, one on each side, with a strut wired between them as high as I can reach. The vines grow from 10 to 16 feet, depending on the season. I let three or four suckers grow on each vine

and remove all others.

When the plants are approximately 18 inches tall, I mulch the area after a good rain with leaves saved from the fall. The leaves help hold moisture, and are tilled in at the end of the season.

I find I get best results by using hybrid varieties, and that 18 plants furnish all the tomatoes my family and neighbors can use. We usually get our first ripe ones June 20-22. At the end of last October, the weatherman was calling for frost and freeze, so I picked two bushels of green tomatoes from 18 plants and we had tomatoes until December.

I think raising tomatoes is an enjoyable hobby. My wife says my singing and whistling while I work is what makes them grow so well.

*Delmer C. Winebarger, Sr.
Lynchburg, Virginia*





TROY-BILT

PONY

PHOTOGRAPHY BY GUY AROZZI

Now there's a TROY-BILT® Tiller for every kind of garden.

Grow anything, anywhere... more successfully with a TROY-BILT® Tiller.

70 million American households garden. That's 75% of all the homes in the country!* Not every gardener is a vegetable gardener; Americans grow flowers, fruit trees, and berries, too. We landscape and care for lawns, trees, shrubs, and ornamental plants.

Gardens may be rectangular plots with long, straight rows, or they may follow the contour of their location.

What's a garden? It's any place set aside for growing things. And when it comes to the craft of growing anything, anywhere...there's no better tool than the classic TROY-BILT® Roto Tiller.

Flower gardens add grace and beauty to every home.

Homes enhanced with flowers have a particular charm. Well-planned flower gardens and landscaping provide color and visual diversity from one end of the season to the other, bespeak the owners' eye for beauty, and can help raise property values as much as ten percent.

Planted in plots close by a dwelling, flowers and plants can make a small home look larger, and break up the mass of a very large home.

Used as landscaping accents in a yard, plots of flowers and



Maneuverable in tight spaces, smaller TROY-BILT® Models bring rear-tine advantages to compact gardens.

plants can add privacy, make living "environments", and screen undesirable features, like traffic, or a neighbor's fence.

Many gardeners grow "cutting beds" — straight-row gardens of Cladiolas, for example — cultivated strictly to be cut and arranged indoors.

Flower cultures vary; annuals are planted yearly, and offer a wide range of colors, heights, and growth habits. Perennials come back every year, and "anchor" a garden you may augment with interplantings of annuals. But in general, flowers need exactly what vegetables do: good soil, sun, and drainage.

Improve the soil before you plant a flower garden.

Building a successful flower bed is easy with the TROY-BILT® Tiller. The bed you create will be a home for plants for years to come, so take the time to build the quality of the soil.

A season before you plant, till up sod or vegetation that covers the area. Spread a thick layer of leaves, straw, or well-rotted manure, and till it in thoroughly. Take a soil test, and adjust the pH as required by tilling in lime or sulphur. Most growing things like a pH that's neutral (7.0) to slightly acidic (6.0).

If you plan a small garden, or one close by a structure, you'll find the extra maneuverability of a smaller Tiller to be an advantage. If you plan a larger cutting bed, you'll appreciate the full power of a larger model.



For the healthiest, most beautiful flowers, fill your soil with organic matter. Till it in a season ahead, with a TROY-BILT® Tiller.

Your home can be filled with beautiful, fresh-cut flowers all season, with a TROY-BILT® Tiller flower bed.

**Source: 1990 Survey by the National Gardening Association.*

Gardens of an acre or more are not all that rare among TROY-BILT HORSE Model Owners.

Mechanical advantage makes a big garden practical.

There's big joy in a small garden. If you can secure yourself a 20' x 20' piece of ground, you can put fresh vegetables on your table, and keep in touch with nature.

Small-scale gardeners often think, "I haven't got enough of a garden to justify a Tiller; I can do it by hand." And for the most part, you can...if you're willing to go to quite a lot of trouble.

It is possible to build soil by hand, by spading in leaves or even Green Manures. You can "till" soil by turning it with a shovel, then raking it out.

But when started as fun becomes work. The garden starts to become unenjoyable, ignored, weedy, unsuccessful. The gardener stops gardening... maybe for the season, maybe forever.

It's easy to garden on a grand scale, with a TROY-BILT Tiller

We built our reputation on big Tillers for big gardens. After all, TROY-BILT® Tillers were once for just the most serious gardeners, when they started at 6HP and went up from there.

And if you have the land, there are many good reasons to have a great big garden. You can grow corn; first on the "wish list" of many small-scale gardeners. You can grow potatoes, pumpkins, every kind of squash... and every other "space stealer".

You can really spread out, leaving aisles four or five feet wide between rows. You can get the benefits of crop rotation. You can segregate vegetables, so your decorative Indian corn doesn't cross-pollinate your sweet corn.

You can grow enough to feed your family and friends for a year. You can sell the surplus at a roadside stand, or to a local restaurant, earning a respectable income.

Many people own Tillers with little or no out-of-pocket expense. Often, Owners earn

enough from selling produce in just the first year to pay the machine off. Many who pay "or time" often earn enough each month to pay the monthly installment.

"People come from miles around to see my flowers..."



I have a hobby of growing flowers. The beds cover 6000 sq. ft. It takes 1800 plants and bulbs to plant this spread.

I used to be in the coal business. This ground where I plant the flowers is where we used to park the big coal trucks. When we first started the ground was packed so hard we had to dig the beds with a dirt pick. It was full of

coal, ashes, brick, and pieces of sewer pipe. Then we bought the PONY. As the Tiller would bring this debris to the top of the ground we hauled it away. I couldn't have done it without my PONY.

Over the years we have plowed leaves, grass clippings and all our dead plants back into the ground, until we have the most beautiful soil you have ever seen. People come from miles around to see the flowers and take pictures of them.

Just think! 10 years of this work and it has never let me down. Congratulations on a wonderful piece of engineering. It has been the most trouble-free piece of machinery I have ever owned.

Russell Edwards,
New Philadelphia, OH



Pumpkins are reserved for those with lots of ground. Heavy feeders, they love organic matter provided by TROY-BILT® Tiller soil building.

Small Tillers give big benefits...at less cost.

Thanks to our new, small models, every gardener can now have TROY-BILT® Tiller advantages.

Now, we would never tell you every gardener must use a machine. Some plots truly are too small. Some people love to work the soil by hand. Others use deep mulch instead of cultivation. Some pay to have their gardens tilled once a year, believing cheaper is better.

But here's our point of view: if you love to garden, even on a small scale, you should consider one of our new, smaller TROY-BILT® Tillers. They'll do the same jobs our larger machines do. Being smaller and lighter, they take a little longer, but they also cost less.



We grew a garden in a gravel driveway just to prove you can garden darn near anywhere with a TROY-BILT® Tiller!

Garden anywhere with a TROY-BILT® Tiller.

Who says a garden has to be a square plot behind your house? While the 20' x 20' backyard garden may be the American average, TROY-BILT® Tiller Owners aren't all that "average".

Our Owners grow flower beds at the base of trees, border gardens at walks and fences, flowers interplanted with vegetables.

How would you feel about a vegetable garden in your front yard? Many Owners report they feel just fine about it; they'd rather till than mow.

Do you have a summer home? A smaller TROY-BILT® Tiller travels in your car trunk so you can have the joy of gardening at both your residences.

You may have no land of your own, but trade produce for use of a neighbor's land. Or use space you rent in a community garden. A smaller Tiller makes a versatile workhorse-to-go.

We named it "Junior", because this 4HP TROY-BILT® Tiller has half the size, weight, and cost of its larger "cousins".



Big performance from a small machine. Power Compost, Till, Hill and Furrow, make ready-to-plant seedbeds like a larger TROY-BILT® Tiller.





The TROY-BILT Tiller is far easier to use than any other gardening machine.

Since we first introduced rear-tine tillage to America, our Tillers have given gardeners a wonderfully different and better way to garden. Our machines are so well designed and so simple to use, you can literally operate them through almost every job by guiding with Just One Hand®. Because it's so easy to use, a TROY-BILT® Tiller will greatly increase the joy you find in gardening.

Our Tiller has its revolving tines in the rear, instead of the front. They turn 1 3/2 times faster than its power-driven, tractor-style wheels. It leaves a perfect seedbed, ready-to-plant, with no footprints or wheelmarks.

Larger models have four forward speeds, and two in reverse. Smaller ones turn on a dime. There's a TROY-BILT® Tiller for every garden size. Turn-of-a-key electric start is available on most models.

TROY-BILT Tiller is the classic American garden Tiller.

The TROY-BILT® Tiller is America's classic rear-tine Tiller, a gardening legend, and the favorite choice of thousands upon thousands of gardeners, growers, nurserymen, tiller renters, landscape gardeners, and home gardeners of all kinds.

A TROY-BILT® Tiller creates a deep, smooth seedbed. A front-tine tiller forces you to walk on the just-tilled beds, marring the surface with footprints and wheelmarks.



The TROY-BILT® Tiller makes a perfectly smooth, ready-to-plant seedbed, up to a turn-eight inches deep.

It does not tangle like front-tine tillers. Instead, it chops garden residues, weeds, Green Manure Cover Crops, old mulch, any organic matter right into your soil without unbearable tangling...turning your whole garden into a fabulously fertile compost pile.

It does *not* require great strength to operate, because it is a perfect combination of balance, power, and function. We have many delighted Owners in their 70's, 80's, even 90's who tell us they'd have given up gardening without the TROY-BILT® Tiller.

There's instant depth control, so you can cultivate close to plants with precision. Hilling, furrowing, plowing and power take-off attachments are available.

Every TROY-BILT® Tiller is built with automotive-style engineering: precision bronze and steel gears, tapered roller bearings, and an exclusive cast-iron transmission housing.

Every TROY-BILT® Tiller is backed by our promise of 100% satisfaction.

It carries the industry's longest, strongest Warranty: our Full, No-Time-Limit Warranty. You also get a chance to try it at home for a month with NO RISK.

Because cast iron can be rebuilt, you can overhaul your Tiller years from now. With our half-price rebuild policy, we will completely overhaul your Tiller for half the retail price of that model or its equivalent.

And above all, the TROY-BILT® Tiller comes with our timeless promise of satisfaction: You will be satisfied, no matter what. We will bend over backwards to make you happy, to earn and keep every customer's goodwill and respect.



We registered "JUST ONE HAND®" with the U.S. Government because most other tillers are two-handed torture devices.

Easier to use than any other style tiller.

Making gardening easier is the reason people buy a good quality Roto Tiller. And because a tiller is a machine you'll rely on for years, it's worth shopping wisely.

Often what looks good on the showroom floor, or in the catalog, may not be easy to use...or just may not work very well once you try it out in your own soil.

A front-tine tiller may have an appealingly low price, but you'll find it shakes you up terribly, wrenching your arms and back...and it has limited performance.

Perhaps you're attracted to the claims of new-design CRT (counter rotating tine) tillers...but you don't realize how limited they are for 95% of the work you'll do.

Long-belt drive tillers, direct-drive tillers...how do you know what's good and bad?

And until you take a good look at the mechanical inner workings of the TROY-BILT* Tiller, you may just not understand how wonderfully well constructed it is.



"I was 100 years old on Sept. 24, 1990."

"This is an 8HP TROY-BILT Horse I purchased a few years ago. I had purchased a 5HP PONY a few years before that and sold it for \$5.00 less than the top price you told me to ask.

Shortly after I purchased the 8HP, a neighbor visited me. I told him about my Tiller and he was so interested I had him try it out in my garden.

After going across my garden twice, he went in the house and called you and ordered one. He is very happy with it. My son-in-law also used mine for his larger garden. I am very happy with my roto tiller. P.S. I was 100 years old September 24, 1990.

*Ralph Westlake,
Rush, NY*



Counter Rotating Tine (CRT) Tillers break new ground efficiently, because the tines turn opposite the wheels, and undercut sod. But in already-tiled soil, they dig too deep, forcing you to constantly lift up on the handlebars.

Garden tractors with tiller attachments can't hill or dig furrows, or cultivate closely. The machine's so heavy, you seriously compact your soil. And it takes nearly half an hour to hook up the tilling attachment!

Off-brand rear-tine tillers can have mechanical flaws. Some use long V-belts that can stretch and break. Some are direct-drive, with no "give". Jam the tines with stone, and you'll stall, shear a timing key, or worse.

Here are the 6 serious flaws of front-tine tillers.

Designed to be affordable for the post-war boom market, front-enders are still popular today, especially among novice gardeners. They're an inexpensive way to put a machine in your garden. Unfortunately, to gain the low price, you make six major sacrifices that — in our minds — make them a very poor choice for anyone who takes gardening even half-way seriously.



Unbearable tangling requires you to stop, cut or pull things loose, and start again...until you must stop and clean the tines yet again.

1. They shake you to pieces.

They shake you up, straining your arms and back. Since the tines power the machine forward, they can't turn fast enough to "spin-up" soil. Instead, they "slap" the ground, sending jarring vibrations through your arms, shoulders, and back.

2. Close cultivation is impossible.

Front-enders have a "split personality": the tines say "go" while the drag stake says "whoa" ...which means they lurch side-to-side, and can easily jump right into the vegetable row you're trying to groom. There's no true depth control system, so you can chop off a plant's roots before you can stop it.

3. They "porpoise" through the soil.

First they go too deep, then too shallow. It's impossible to till an even depth. Let the drag stake take hold, and the machine "digs for China". Lift up on the handlebars to move forward, and the tines take over, jerking your arms and back. Hit a rock or hard spot...better hold on tight!

4. They tangle unbearably

They "ball up" terribly in organic matter. Because the tines propel the machine, they turn slowly. Instead of chopping up organic matter, it simply winds up like a string on a yo-yo. The machine eventually stalls out and you're left with a twisted "ball" of material to untangle as best you can.

5. They make you leave footprints and wheelmarks.

You are forced to walk all over the soil you've just tilled. Besides looking sloppy, surface marks like this actually replant weed seeds, and give erosion a place to start.

6. They simply cannot build soil quality.

Power Composting is impossible with this kind of Tiller; they just cannot chop and bury organic matter of any kind very well. Good gardeners know a great garden starts with great soil, and it seems a waste of money to us to get a machine that can't help you work to improve tilth.





The TROY-BILT Tiller is built with quality — by gardeners for gardeners.

Every ounce of every TROY-BILT Tiller is quality.

It's pretty unusual these days to find a company that makes most of its own parts, does its own machining, and assembles everything in one location. But that's what we've done with our Tillers, for over 20 years, right here in our TROY-BILT® Tiller factory in Troy, New York.

You won't find stamped metal transmission housing parts... plastic gears... or second-rate materials in any TROY-BILT® Tiller. You will find cast-iron construction, bronze and cast-iron gears, heavy-gauge steel — in short, the strongest, highest-quality materials, precisely machined, fitted, and assembled by hand with care and pride.

Four reasons we build only the best.

First, the TROY-BILT® Tiller has always been built this way. A sign on the Factory wall reflects our heritage: "Some call 'em over-built; we call 'em TROY-BILT!"

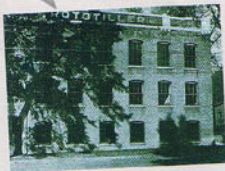


Quality that goes into every TROY-BILT® Tiller, we machine bronze gears ourselves, assuring precise tolerances for a lifetime of hard work.

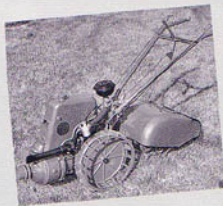
Second, we believe in making only highest-quality machinery. The world is full of tools that don't do what they're supposed to. We take quite a little pride in building the machine that is universally accepted as the standard of quality in our industry.

Third, our customers expect nothing short of "the best" from us. We've built our reputation by being America's first Rear-Tine Tiller, still the best today...and we wouldn't risk the business our good name brings us for anything.

And fourth, we're gardeners ourselves. We know from first-hand experience what a gardening machine should do. From the Factory floor, to the mail room, the shipping area, and the office ... many, many knowledgeable gardeners have a personal, vested interest in keeping TROY-BILT America's #1 garden machine.



Our handsome brick home since 1937 bears the name "Rototiller" from the days when we sold the only Rear-Tine Tiller in America. Factory tours given free, daily, except Sundays and holidays.



Our 1934 Model AA All-American was the first Rear-Tine Tiller manufactured in Troy, N.Y. It had "pointed pick" tines, and shock absorbers.



"I like it", and President Eisenhower liked the Rototiller, back in 1955. This photo ran in hundreds of newspapers that year. Tiller sales boomed.

Here are the quality features that place the TROY-BILT® Roto Tiller in a class by itself

We recognize that a TROY-BILT® Roto Tiller/Power Composter is a serious investment for those who find gardening an essential part of life. We think it's a good gardeners' best investment — one that you'll enjoy as long as you keep gardening.

And because we expect you

to garden for your whole lifetime, we build our Tillers to last that long, too.

We're proud of the reputation our machines have earned us. Here are the features that have made the name "TROY-BILT Mfg.," synonymous with "Quality" for generations of American gardeners.

Operator Presence Controls.

Stop the tines and wheels immediately when you let go of the handlebars. This control meets the safety standards of the American National Standards Institute, certified by the United States Testing Co., Inc.

Comfortable, adjustable handlebars. No tools needed to raise or lower the tubular steel handlebars to the most comfortable position for you.

Wheel Speed Lever. On our Horse Models, you select fast or slow wheel speeds with the simple shift of a lever. There's also a free-wheel position that lets you roll the machine without the engine running.

Four speeds forward, two reverse. Our Horse Models have two gear ranges; high and low, with two forward and one reverse speed in each range...plus neutral. You easily choose the range and the speed for the job at hand.

Instant Forward/Neutral/Reverse Lever. Push down, the transmission engages forward. Lift up, it shifts into neutral instantly. Lift still further, and reverse is engaged. And when you let go, it returns to neutral as soon as you release the lever.

On-the-spot instructions. You should read your full Operator's Manual. But for use while in the garden, simple operating instructions are printed right on the tine hood and the handlebars' control panel.



These features apply to our larger, most-popular Horse and Professional Model Tillers.

Accurate, instant depth control. One simple, spring loaded lever controls how deep you till.

"Travel position" lifts the tines off the ground; change to full eight inch deep tilling (or any depth in between) instantly — just by raising or lowering the depth regulator.

Soil-breaking tine hood. Heavy-gauge, "coined" (embossed) steel, an oversize hinge, and 33 individual welds make this a strong housing for the tines. It has to be: tines revolve and throw soil against the hood, breaking up lumps.

Seedbed-smoothing hood flap. Just-tilled soil is smooth, flat, ready to plant. Much of that is due to the hood flap; it gives the seedbed a final "raking" as the Tiller does its work.

Rear-mounted Bolo Tines. Years of in-garden testing have proven our tines are the most efficient shape and arrangement for both Tilling and Power Composting. They turn an impressive 13½ times faster than the wheels to chop, mix and aerate the soil.

Tractor-style powered wheels. Wheels turn with tremendous torque. Coupled with deep-lug, tractor-style tires, you'll easily manage heavy clay soil, and even the softest, deep-tilled garden without bogging down.

Top quality engines. We do not manufacture engines. We have dealt with our suppliers (Kohler, Briggs & Stratton, Tecumseh) for years, and insist they meet our very strict specification standards.

NEW! Baked-on Powder Paint finish. We've installed a new paint line that bakes the finish on — at 400° for half an hour!

Deep, lustrous finish is actually five times more resistant to corrosion, fading, and scratches than liquid paint.

The Bolo Tine is a marvel of engineering.



Bolo Tines do all the hard work of tilling.



Offset Angle Engaging the soil 12,000 times per hour, each Bolo Tine has a tough job to do — chopping, slicing, stirring soil and vegetation. Far more than simple pieces of steel, the 16 tines on a TROY-BILT® Roto Tiller are made up of a sophisticated combination of curves and angles.

Offset Angle creates hoeing action. Reaches out and breaks surface, carries soil back for further tilling.



Sweep Back Angle lets the tine shrug off vegetation, discourages tangling.



Long Bolo Curve means blade cuts along its edge with a smooth, constantly changing angle of attack.

"We've had our TROY-BILT® Tiller for over 30 years!"

We are still tilling our garden, spring and fall, with the TROY-BILT® Roto Tiller we have had for over 30 years. We have no way of determining just when it was built, because we bought it — second hand — over 30 years ago, from our neighbor in Illinois.

We retired to Minnesota in 1977 and brought the Roto Tiller with us, just in case we decided to continue our garden. And it still performs

beautifully for us. In fact, I had better carrots and beets this year than ever!

We have had many comments from the neighbors. They are amazed that such an "ancient relic" can perform so well after all these years. It should certainly convince them that a TROY-BILT is most assuredly very 'well-bilt' ...to last and last and last.

Mr. & Mrs. Edwin Granback,
Lake City, MN

This exclusive transmission is the heart of every TROY-BILT® Tiller.

The cast-iron, gear-driven transmission has long been the well known trademark of the TROY-BILT® Tiller. We chose these materials because of their tremendous strength, and because heavy-duty machinery *should* be built this way.

There are easier ways to build a garden machine, and certainly less expensive ones, but no other design meets our criteria for craftsmanship...or our fanati-

cal penchant for quality.

The philosophy behind our Tiller is a vestige of another era; a time when tools were *crafted*... and were put together to last a lifetime. Very few tools are built this way any more. You can see at a glance the TROY-BILT® Tiller is solid, heavy-duty, built to work hard and perform for a lifetime and more.

Entire gear transmission rotates constantly in an oil bath.

Durable wheel shaft is one inch diameter, made from solid cold-drawn steel.

Steel worms on the drive shaft provide final reduction of engine speed, transform speed into torque necessary to till.

Bronze worm gears are forged for durability, machined right in our Factory. Meshing softer bronze gears with harder steel gears absorbs shocks, and reduces wear.

Solid cold-drawn tine shaft is 1/4" in diameter, machined so the tine holders self-center.

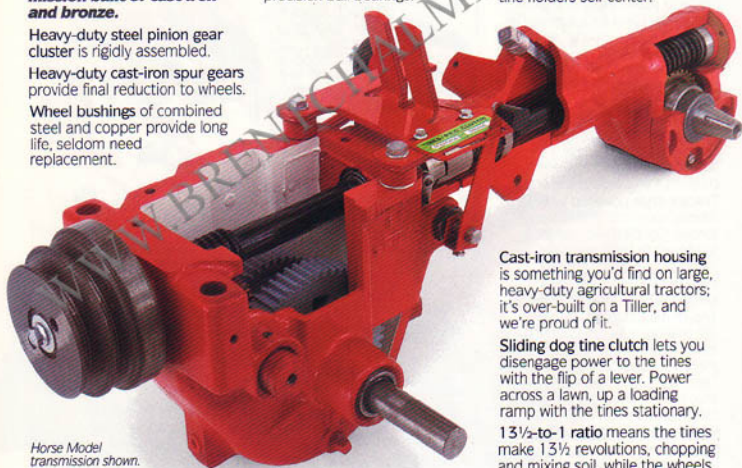
No other tiller has a transmission built of cast iron and bronze.

Heavy-duty steel pinion gear cluster is rigidly assembled.

Heavy-duty cast-iron spur gears provide final reduction to wheels.

Wheel bushings of combined steel and copper provide long life, seldom need replacement.

Pinion gear shaft is mounted on precision ball bearings.



Horse Model transmission shown.

Step-pulley yields two speeds on our Horse models; internal gears provide two ranges; a total of four forward/two reverse speeds.

Power Take Off is standard on our Horse Models. Remove tine section by loosening two swing-bolts. Hook up powered and non-powered attachments, like the generator and PTO Shredder.

Cast-iron transmission housing is something you'd find on large, heavy-duty agricultural tractors; it's over-built on a Tiller, and we're proud of it.

Sliding dog tine clutch lets you disengage power to the tines with the flip of a lever. Power across a lawn, up a loading ramp with the tines stationary.

13½-to-1 ratio means the tines make 13½ revolutions, chopping and mixing soil, while the wheels make just one revolution, moving the machine at a steady, convenient pace.

Our Product Innovators take quality personally.

As our Director of Product Innovation, Choppy Wicker has plenty to say about the kind and quality of products TROY-BILT manufactures. Choppy is part engineer, part salesman, part showman, part incurable tinkerer... and full-time consumer advocate.



Choppy (Charles) Wicker is our official Director of Product Innovation...and our unofficial Steward of Quality Consciousness at TROY-BILT Manufacturing Co.

Q. Choppy, what does "Product Innovation" mean at TROY-BILT?

A: We build top quality power equipment, and we believe in what we make. Most TROY-BILT employees work on today's business, product innovators think five or ten years ahead.

We constantly improve existing products, and also develop new ones. Part of my job is to

get other TROY-BILT employees interested in pursuing totally new ideas.

Q. How has TROY-BILT improved its Tiller?

A: In one instance, we actually increased engine life 700%. Another example is the PTO (Power Take Off) that's built into all our Horse models. Because you can bolt on Attachments like Shredders and Generators, the Tiller's more versatile. At the same time, the drive train is stronger.

Q. You can't develop every idea; how do you choose a good one?

A. Every idea must fill a genuine need, enhance the quality of our machines, and give good value.

Here's our value criteria: our Tillers are affordable to most serious gardeners. Our Tillers make you feel good when you use them. Given reasonable care, a TROY-BILT* Tiller should last you the rest of your gardening days.

I take quality personally, because I know a lot of our customers personally. Whenever I have a chance to influence the quality of our Tillers, I think of the gardeners I've met, and ask myself, "How can we give these people a machine with top performance, durability, and value?"

stand up to the punishment of rental use.

A team of engineers studied various Tillers' construction, safety, ease of maintenance and repair. Most brands were eliminated before they even got to the final phase; actually proving ease of operation and tilling effectiveness.



Q. Why are customers' needs so important to you?

A. When I first started at TROY-BILT, I actually went door-to-door selling Tillers. I didn't sell too many, but I met hundreds of gardeners. I understand why gardening is such an important part of our peoples' lives.

My first year, I answered 10,000 customer letters. A reverend wrote, "If people don't have something productive to do, they will slow down and stop. Gardening is the best thing for people, because it gives them something really active and rewarding."

Q. What do you predict for gardening machines of the future?

A. The TROY-BILT* Tiller of the 21st century will make gardening easier and more enjoyable than ever. That's all I can say for now!

The well-known U-HAUL Rental Company declares it "bulletproof".

Extensive testing of all major rear-tine Tillers was recently done by the U-HAUL Rental Company. Choosing the best tiller for their rental centers was an important decision for them, because their equipment must

In final durability testing, the TROY-BILT* Tiller was run for hundreds of hours. When all the test information was compiled, U-HAUL chose our Tiller over all others. Calling it "a bulletproof piece of American farm machinery", TROY-BILT* Tillers are featured at many U-HAUL rental centers.

We're a company of hands-on gardeners.

You don't have to grow a garden to work here, but many do... of one form or another. Many of us were drawn to TROY-BILT in the first place because we have a special love of gardening, and fine tools that do good things for people.

All TROY-BILT employees get a day off in the spring. We call it "Gardening Day"; a private holiday set aside for getting our home gardens in.

We have an on-site Gardening Program, where gardening space is provided to any employee who wants it. Our popular Loaner Program gives any employee short-term use of any

equipment; our Discount Program gives TROY-BILT employees financial incentives to buy their own.



The fruits of our on-site Gardening Program are enjoyed by younger TROY-BILT employees who may not own land of their own.

Young father keeps his family happy and healthy... with an organic garden.

Twice a year, spring and fall, I take advantage of the company's equipment loaner program and bring home a Tiller. The plot is only about 25 by 25 feet, but I borrow the 7HP model because

it gets the job done fast. One time I decided that the back lawn needed reseeding, and did that too, while I had the machine.

How many people eat from the garden? I'd have to say three and a half, since we have a small baby. My son Adam is four, and he likes to help pick the beans and peas and so on, eating as he picks. When he's a little older, I'll teach him to weed. I've learned a lot about gardening at work, from our literature and from people on the staff. I'd have a garden even if I didn't work here, but nothing like what I do now. I find it both relaxing and productive. There's great satisfaction in sitting down to a meal and knowing that the vegetables came from our garden.



"I can answer many customer's questions from my own gardening experience."

My husband and I have gardened at home for many years, raising vegetables for a good-sized family (down to three at home now). I suppose we plant from an eighth to a quarter of an acre. We've always liked tomatoes and peppers, especially, and I put in a few flowers — marigolds and so on — around the edges.

We have an 8HP TROY-BILT[®] Tiller and we use it all year: for soil preparation, for cultivating, for soil improvement in the fall, and then to plow snow in the winter. I like to run it myself; I think the weight of the larger machines is an asset. Our soil is clay, enriched with manure and leaves, so we make raised beds with the Hiller/Furrower for good drainage and an earlier start in a wet spring.

The company gives us very good training, but I still find that my gardening experience is a big help on the job. We get many questions from customers, about gardening as well as about TROY-BILT[®] equipment, and I find that I can answer many of them from my own knowledge. That's very satisfying!

—Grace Caryofilles,
TROY-BILT Customer Service

—Paul Crisafulli,
TROY-BILT Print Production



"I'm a fussy old coot when it comes to the quality of our Tillers!"

...says Quality Assurance Inspector, Al Jolicoeur. "When I pass on a unit to be crated and shipped, it's a unit I would buy myself," says Al Jolicoeur. He's the last man in our Factory to inspect our TROY-BILT® Tillers, and this attitude is shared by all our skilled craftsmen and women. It's that kind of pride that has helped make the TROY-BILT name an American institution.

Al Jolicoeur
TROY-BILT Quality
Assurance Inspector



"Working here made me a better gardener."

I've gardened all my life, really, but especially in the past ten years or so since my marriage. We have two gardens—a 20' x 30' area in front, planted with flowers and some vegetables, and a 25' x 50' vegetable plot in back. There are five in our family, but we always grow more than enough and give a lot away. We can and freeze, and it saves us a good deal on the grocery bills, especially with prices rising as they are now.

The TROY-BILT® Tiller I use is a Pony Model, one of the first we made. It's at work all season, from spring tilling to summer cultivation, to putting garden to bed in fall. We have clay soil that needs plenty of leaves and so on tilled into it each year.

I've learned a lot about gardening on the job, reading Garden Way publications and picking up ideas—raised beds to give more uniform carrots in our clay soil, for instance, and wide-row planting, which I use for most crops other than corn. I probably wouldn't be aware of those techniques if I didn't work here.

—Dave Hansen,
TROY-BILT Engineering
Administration

What's a TROY-BILT® Tiller really worth?

Earn money.

First, it can earn you \$20-30 an hour if you do Custom Tilling. Those are gardeners who use their machines to till other folks' gardens for hire. It's a great way to make extra cash, and it can actually pay off your Tiller in just a season or two!

All it takes to get started is a simple ad in a local paper, and a truck, trailer, or station wagon to haul with. You'll be surprised how many calls you'll get...for spring ground-breaking, summer weed cultivation, and fall bundle-ups.

Once you've established good "clients", you can pretty much count on their repeat business, and referrals to their good gardening friends.

Save money.

Second, it can SAVE you \$1000 or more in reduced food bills. Just to find out how the finances really work out, we did an interesting gardening experiment.

We set up a typical 30' x 40' garden at one of our facilities. We planted with a TROY-BILT® Tiller, and used all our TROY-BILT® Tiller "secrets". We kept meticulous records of our crops, and weighed each harvest carefully. Only the table-quality vegetables were counted.

Then we went to the local supermarket to learn the dollar value of our home-grown produce. Even we were flabbergasted when the total value of our summer harvest exceeded \$1000!

How much can you save? It depends on what you grow. If you're truly interested in saving on your food bills, go for a season-long harvest by planting early, using Succession Planting and harvest-extenders.

(Money saving tip: Red sweet peppers are usually very expensive in the supermarket. You can grow your own, simply by letting any green bell pepper ripen to full maturity. They color up a salad beautifully, and mature peppers are far more nutritious than when they're green!)



We've based our business on giving every customer excellent service...every time.

Back in the early '60's, we did something very unusual; we started selling 300 lb. Tillers direct from our Factory, by mail. Long-distance selling wasn't easy; many people felt dealing with a company hundreds (or thousands!) of miles away was just too risky. We decided if we were to be successful, we had to provide absolutely outstanding service.

Today, you can ask anyone who has done business with us. We provide a level of service that is virtually unheard of. We stake our reputation on the goodwill of our customers, when we pick up the phone, answer a question, take an order, fill a parts request, or resolve a problem.

The best Service in the industry...by phone, mail, or in person.

We distilled our philosophies of excellence into what we call "The TROY-BILT Tiller Code" ...and we use it as the basis of every dealing with every customer.

Over the years, we've set up a chain of Dealerships and our own Factory Stores, to bring our own special brand of excellent Customer Service to those who'd rather buy from a store that's close to home.

Today, you can choose how you'll buy. Many people like the convenience of ordering by phone or mail, direct from the

Personal, knowledgeable service is the hallmark of TROY-BILT; before, during, and well after you buy.



These words sum up the philosophy we have about Customer Service. We will absolutely bend over backwards to earn and keep your goodwill and respect.

Factory. Others would rather see the lineup, and kick the tires, before they buy.

"I easily replaced the carburetor myself!"

I had to replace my HORSE Model's carburetor and was concerned about proper fuel and air mixture, especially after the smooth-running and efficient carburetor it came with. My concern for proper carburetor adjustments were all for naught, as after the second pull the HORSE jumped back to life, running just as smoothly as it did when it came from the shipping crate three years earlier. I simply followed my

Either way you decide, you get this Timeless Promise of Satisfaction: you will be happy with every dealing with us, or we will bend over backwards to make you happy.

Maintenance is easy for anyone, anywhere.

Our machines are built like a vintage automobile: solid, straightforward, simple, functional, easy to work on. So if you're wondering how you'd ever service or repair one of our

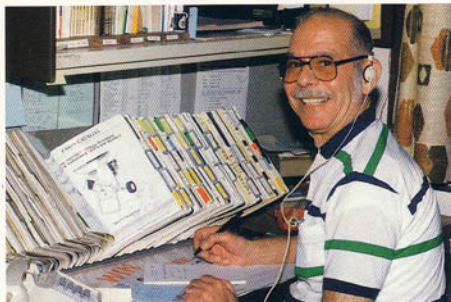
machines once it's at your place, please don't.

Many thousands of Owners do their own repairs, with the help of our extensive Owner's Manual. Those who choose to have repairs done for them have no trouble locating one of our 700 Dealers, or a local mechanic who can do the job.

Owner's Manual and easily replaced the damaged carburetor myself!

I remain amazed at the quality and workmanship built into each and every TROY-BILT product. I love T-BON, my red 'work horse', the excellent Owner's Manual and all of your excellent newsletters that accompany the purchase of a Tiller. The TROY-BILT® Roto Tiller is American quality at its finest and I know I could never settle for anything less.

*Robert Lynam,
Jacksonville, AR*



For Sales, Call TOLL-FREE
1-800-828-5500. For Service,
call 1-800-833-6990.

**An Owners' Manual that's
easy to understand.**

Our Owners' Manual is the most complete in the industry; it's actually easy to read and understand! It's packed with step-by-step photos detailing exactly how to set up your Tiller, plus precisely how to handle common maintenance procedures. You can easily follow them yourself or give the manual to your mechanic for him to follow.

**An open charge account for
immediate parts shipment.**

Once you buy a TROY-BILT® Tiller, you get a charge privilege for parts. We stock thousands of parts, even for our older Tillers, and will ship them to you ASAP. If you ever need advice or further information about doing any service work, one of our Service Reps can even "talk you through it." Just call toll-free 1-800-833-6990.

**Our financing plan spreads
the payments.**

You can spread your payments with our Easy Payment Plan. We don't advocate purchasing "on-time" for just anything, but certain essentials — like a car, or a food freezer — are so worthy, we can feel good about paying on time, if it means we can have them sooner. The Tiller is that type of purchase. For many years now, we've offered a financing plan that has put Tillers in the gardens of many hundreds of Owners, months or years before they've paid for them. For details, call TOLL-FREE 1-800-828-5500.

**Two TOLL-FREE Hotlines...
to ask any question...or to
place your Order.**

Perhaps you live near one of our Dealers; you can stop by and see things for yourself. But if you're not near a Dealer, or if you simply want more information on any aspect of our Tiller, you can call us any time, TOLL-FREE.

We have a full staff of trained, knowledgeable sales people who know our Tiller inside and out, and can tell you all about any sale, price, or offer.

We have another department devoted to the technical side of our products. If you want to know in detail about performance, or the technical side of any mechanical question, you can call our technical service hotline.

OWNER/OPERATOR MANUAL

DONY

**OWNER/OPERATOR
MANUAL**

TROY-BILT® Roto Tiller-Power Composter

**PTO
HORSE
MODEL**



*Our manuals win our
Owners' praise; we write
them to be clear and
exceptionally easy
to follow.*

Plus...you can try it RISK FREE for 30 days.

This unique policy was designed to make buying completely risk-free. We invented it to ease the minds of our customers who live hundreds or thousands of miles away from our Factory, and couldn't come see the machine for themselves.

Our 30-Day policy gives you a chance to buy a tiller...try it for yourself in your own garden...and then decide whether you'll keep it or not. If you decide "no," you can return it without losing a dime!

Here's how it works: Try a TROY-BILT® Tiller in your garden for a month from the time it's delivered. If you're not 100% satisfied, notify us and return it for a full refund of the purchase price you paid, and we'll pay all the shipping costs.

Rebuild your Tiller — anytime — for half-price.

You can have your Tiller rebuilt for half-price at anytime. No matter how old it is, we'll rebuild and repaint your TROY-BILT® Roto Tiller/Power Composter, replacing any worn parts (such as bearings, gears, seals, tires, belts, and including a new engine) for one-half the current retail price at the time of repair of that model or its equivalent (if that exact model had been changed). Owner to pay shipping and container costs to and from the Factory. If any other than wearing parts need replacement, an estimate will be submitted to the Owner for approval. This offer, of course, is subject to fire, war, strikes, and other contingencies beyond our control.



The T-BON is our own private newspaper... written by gardeners, for gardeners.

A FREE Subscription to our own gardeners newspaper.

You get a FREE subscription to the TROY-BILT Owner News (we call it T-BON). It's our several-times-a-year way of staying in touch with our Owners, and passing on tricks and tips about gardening. We give you service and maintenance information, let you know of new product developments, and tell you of special offers on all kinds of TROY-BILT equipment. Far better reading than some magazines you pay for!

You get the very best warranty in the business

What is Covered:

Your TROY-BILT® Roto Tiller/Power Composter is carefully inspected and tested at the Factory. We or your dealer, will at any time repair or replace at no cost to you, any part which we find to be defective in materials or workmanship except the engine, which is warranted separately by the engine manufacturer. (Call or write us for a free copy of the engine warranty.)

This FULL NO-TIME-LIMIT WARRANTY also applies to ALL attachments, except any powered PTO attachments (such as Log Splitter and Generator) which are warranted by their manufacturers for one year. Write us for details. (NOTE: Warranty for commercial use is limited to (1) one year.)

How to Get Service:

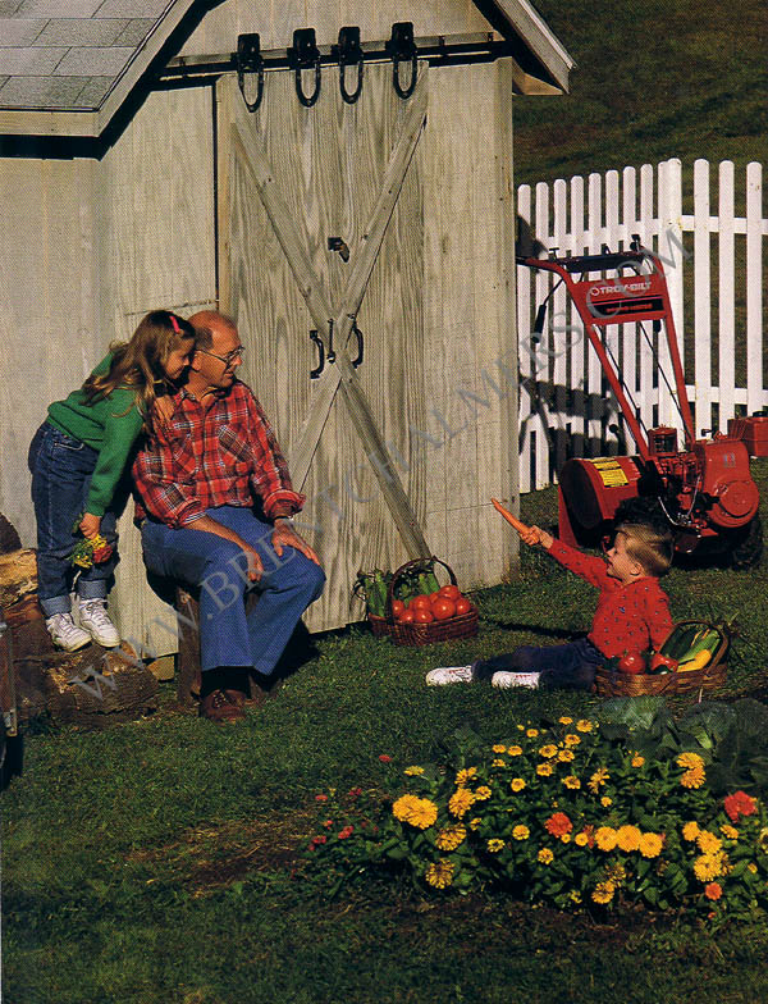
To obtain warranty service, write to: TROY-BILT Manufacturing Co., 102nd St. and 9th Ave., Troy, New York 12180, or call TOLL FREE 1-800-833-6990, or consult your Yellow Pages for your closest TROY-BILT Dealer.

Your Rights Under State Law:

This warranty gives you specific legal rights, and you may also have other rights which vary from state to state.



TROY-BILT
An American Legend Caring For The Land.™



THE TROY-BILT® Tiller will enable you to have great gardens for years to come.

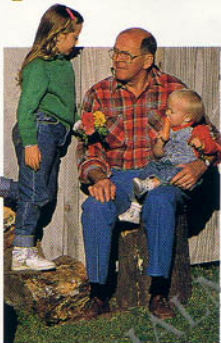
Fresh vegetables are but one reason to garden. And having wholesome, home-grown produce is certainly a worth-while reward. Those who wish to save money can substantially reduce their food bills. People who are careful about diet can have an abundance of vegetables all season. Those who are concerned about the health effects of chemicals or pesticides can dine relaxed, knowing exactly what's in the food they're eating.

But if having fresh vegetables was the only reason to garden, millions of today's gardeners would have resigned long ago. Gardening takes time, planning, and commitment. It takes labor, even with a fine tool like the TROY-BILT® Tiller. Its rewards are humble; a bowl of fresh peas, or a vegetable stew. And all too often, an unpredicted cold snap or a nocturnal visit from a raccoon can bring an abrupt end to plants you've nurtured.

And yet, gardeners continue to garden.

Gardening in all forms remains one of the most popular outdoor activities in America. Serious gardeners, and especially TROY-BILT® Tiller gardeners, cultivate larger gardens over time. We try different vegetables, different techniques season to season. We form friendships with other gardeners. We join garden clubs, enter vegetables in county fairs (and win blue ribbons!).

Those who take gardening seriously often enjoy the peaceful, rewarding parts of life.



Close connections — of the land, to living plants, to each other — are the special rewards of gardening.

If you love to garden, you know this: the fundamental, essential peacefulness of gardening is what has incurably attracted us, and has made lifelong gardeners of so many. For us, gardening is no less than an essential and deeply rewarding part of living a meaningful life.

Our Tiller is an enabling tool that enhances the joys of gardening.

We deeply believe gardening is an important part of life. And we know that it is *more* joyful if the laborious parts can be kept to a minimum. That's why we build the TROY-BILT® Tiller the way we do: to enable you to garden more successfully than ever, while vastly reducing the effort, energy, and time you must devote.

Gardening joy with JUST ONE HAND!

If you've ever operated a front-tine tiller, you know that you've got to hold on tight with both hands, and fight the machine as it jumps and lurches. But with a TROY-BILT® Tiller, operations are smooth and simple to perform. They're so simple, in fact, you can hold on with a single hand, walking alongside, and remain in complete control.

This means that nearly any one can operate a TROY-BILT® Tiller: you don't have to be large-framed, young, or strong.

Easy to use because it's perfectly balanced.

Part of the reason the TROY-BILT® Tiller is such an easy machine to use is the perfect *balance*. The tines are mounted in the rear, and are counterbalanced by the weight of the engine in the front.

The transmission is made of cast iron and bronze. This gives it extraordinary strength and long life, and it also adds mass. The mass holds the Tiller on the ground, so it can turn tough soils without lurching.

Powered wheels move the machine, so you never push or pull. They act as a balance-point, making turning and maneuvering a simple matter for anyone.

Tines in the rear do a thorough job fast.

Tines in the rear serve another, more important function. They turn 1 3/2 times faster than the wheels, to chop and mill the soil into a perfect seedbed. Because you can walk alongside, you avoid walking on the freshly-tilled soil. When you're done, it's perfectly smooth and ready to plant.

You can have a finished seedbed in a mere fraction of the time it would take by hand.

Turn your whole garden into a rich compost pile.

The fast-turning tines can chop and bury organic matter easily. They'll turn under leaves, straw, manures...even standing cornstalks.

Perhaps you've built a compost pile and used the compost to nurture plants. With the TROY-BILT® Tiller, you have the capability to improve hundreds of square feet of garden soil, simply by tilling in free organic matter.

You can have a beautiful garden with far less work than ever before!



Nurture your garden skills, as you appreciate the peaceful joys of gardening.

We'll stay with you as you become an expert gardener.

We can't promise you'll become a certified Master Gardener, but more than a few of our Owners have. Even if you don't earn the title, you can be certain your enjoyment and understanding of gardening will increase through the years.

For one thing, we continually share information with you. We send our Owners gardening tricks and tips we've tried ourselves. A popular feature in our gardening newspaper is the letters column; letters from our Owners, sharing gardening know-how with other Owners. We also send our Owners news on product innovations, and news of special offers.

The whole process of garden-

ing becomes easier once you own a TROY-BILT® Tiller. Your soil will improve, becoming more fertile and easier to work. The weed population in your soil will become smaller. Rocks up to softball size won't even bother you.

You'll be able to plant earlier in the spring and harvest later in the fall. You'll easily grow vegetables you thought were too tender for your region. You'll grow two or three successive crops in the same space in a single season. You'll weed your whole garden in minutes, when it used to take hours by hand.

All this and every other promise made in this booklet will come true for you, once you own a TROY-BILT® Tiller.

Perhaps best of all, your satisfaction is guaranteed.

We are proud to give a Full No-Time-Limit Warranty on our Tiller. That's the very strongest warranty in the entire tiller industry.

We have financing available; customers who meet our simple credit requirements can get a TROY-BILT® Tiller with *No Money Down*.

We give every customer a 30-Day Risk-Free Trial Offer, to let you try this wonderful machine for yourself, in your own garden, without risking a dime.

Beyond that, we make you this guarantee of satisfaction: Our business depends on every customer. We believe the customer is always right. We promise to do everything possible — every time you deal with us — to bend over to do right by you, to earn and keep your goodwill and respect.

If gardening is an important part of your life...

If you love to garden, shouldn't you own this wonderful machine? It will change the way you think about gardening, and the way you practice it. It will bring you far more pleasure and gardening success...and will call for much less time and effort than any machine you've ever seen or used.

Once you own a TROY-BILT® Tiller, you may well ask the question mused by so many Owners before you: "How in the world did I ever get along without it?"

We of the TROY-BILT® Tiller Factory invite you to join us — and over 1,000,000 Owners — who live the fulfilling TROY-BILT Way of Gardening!

The TROY-BILT Way of Gardening is...*

- ...new, wonderful, and important in the whole history of gardening.
- ...the salvation of gardeners who have been tortured by inadequate front-tine tillers.
- ...so easy, sensible, profitable, enjoyable, that people are growing bigger, better gardens as a result.
- ...a new lease on life for older folks; an open door to a much more worthwhile and satisfying life for young people.
- ...the basis for more family self-sufficiency and security from the inflation/recession cycle.
- ...improving your soil by Power Composting it into a rich, fabulously fertile compost pile.
- ...having a great, big garden with a lot less work; or a smaller one with success and ease once reserved for "big machine" gardens.
- ...having plenty of food to eat fresh all season — give away by the bushel, freeze and can for winter, saving money all year long.
- ...not having to walk on the fresh seedbed you've just tilled; not leaving footprints or wheelmarks to mar the beautiful surface.
- ...recycling leaves, surplus organic matter of all kinds to enrich garden soil.
- ...being a TROY-BILT® Tiller Owner which means a lifetime guarantee, high resale value, excellent service, half-price rebuild privilege, direct-from-Factory savings, constant receipt of useful gardening wisdom, membership in one of the most enjoyable families you can imagine.

...Wide Row and Raised Bed growing, and generally getting the most out of any size garden.

...being able to grow a greater quantity of vegetables, of different types than are generally thought possible for your area, in a more effective and efficient way, than has ever been possible before.

...finding the spiritual peace that exists within yourself, and enjoying it to the fullest, as you actively practice the Garden Way of Living.

**This 1975 statement of our purpose remains equally vital and poignant today.*



Our Owners are the Salt-of-the-Earth, and they tell the TROY-BILT® Tiller story best.

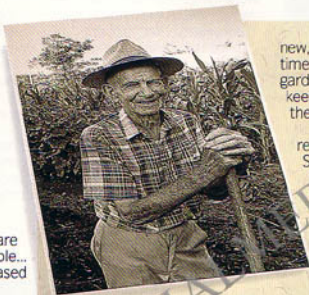
Each year, we receive hundreds of letters and snapshots from our TROY-BILT® Tiller Owners. They tell us about every imaginable gardening subject from simply praising the quality and usefulness of our Tillers...to making some unique and helpful suggestions for improvements to our machines.

TROY-BILT® Tiller Owners are hands-on, hard-working people...often with strong opinions based on years of trial and error.

They're people who've laid down hard cash for their Tillers, folks for whom gardening is no mere theory; it's an important part of a vigorous, hearty life-style. That's why when our Owners talk, we listen...because nobody knows the Tiller better than those who depend on it.

We're proud to be held in high regard by people who love to garden, who make their purchases prudently, know the way machinery ought to work...and aren't afraid to tell you about it.

We get letters daily. Our Owners like to stay in touch because gardening with the TROY-BILT® Tiller is a very important part of their lives.



Fred Lannon began gardening with a spade and hoe, then a one-horse plow, then a front-end tiller, and finally a TROY-BILT® Tiller. Today, having gardened with his TROY-BILT® Tiller for over 30 years, his advice is to "keep your ground well worked, and enjoy life."

"I suggest anyone with ground enough, to buy a TROY-BILT® Tiller."

Once upon a time, as all stories should start, I married an eighteen year old flapper. We lived in our small home on a lot 100 by 150 feet. A small lawn in front and a chicken yard in back, and the rest in a small garden. My garden tiller was a spade, a hoe, and a rake. A few years and a couple of daughters later, we moved to an acreage; five acres in fact. I had a little better way of cultivating; with a horse, a one-horse plow, a harrow, and a double-shovel plow. My land was

new, rough and not too fertile. In time I was able to raise a nice garden. It was hard though, to keep moisture at the roots of the crops.

Time passed on and I had to retire my horse to the pasture. So I bought a front-end tiller.

I didn't know about the TROY-BILT at that time. I wore that tiller out and was undecided about a new one. One of my daughters asked me why I didn't buy a TROY-BILT® Tiller. I told her I was undecided.

One day she came home from work and said, 'Daddy, I ordered you a TROY-BILT® Tiller'. In a few days it arrived. I was thrilled at the way it operated. I used it for 25-30 years with very little expense for repairs.

Finally, I thought I'd want a Tiller with an electric start. So in the fall a few years ago I ordered an 8HP Electric Start. I only cultivate about an acre now, but with the things I have learned since moving to this home, I can raise all the vegetables we can use as well as selling \$200-\$300 a year. Helps on my retirement. I suggest anyone with ground enough, to buy a TROY-BILT® Tiller when they retire. Keep your ground well worked and enjoy life. I've had a good life and enjoyed it, and I'm still married to my flapper. Lots of luck to TROY-BILT.

*Fred Lannon,
Tulsa, OK*



"My garden manufactures rocks!"

I am writing to thank all you nice folks at TROY-BILT for your wonderful products, which I have

had the experience of using. My expertise is in its infancy yet, but this year I have a garden which is about 20' x 80' feet and I can truly say that without my Econo 6HP and Speedy Hoe, I could never have developed as successful a garden as it is.

My land is very rocky. When I work my Econo Horse over the land it seems that it manufactures rocks. I keep tossing them aside and more keep coming up, big ones! I'm still green about a lot of things in the garden, but enjoy a green thumb too and enjoy seeing things grow — I have tomatoes, cauliflower, lettuce, radishes, and scallions. I harvested more than anticipated by late August.

The ground never gave radishes for it was too thick and hard but with your tillers, the

earth is very workable. I also took the Horse to my friends and tilled their garden, and several weeks later worked between their plants with the Speedy Hoe. I am very happy with the results. Strangers passing stop to compliment me on my great results, and I proudly show them my TROY-BILT equipment. Your name pulls like a magnet.

Keep sending any information you have, I enjoy reading all of your publications. All the new innovations and interesting articles make me feel like I'm part of a great family!

Next year I'm planning on expanding the garden, confident I can achieve anything with my trusty Econo-Horse, sure-footed garden companion!"

*David Pierce
No. Branch, NY*

"I harnessed up my NY-bred Horse and gave it a try."

In October 1987, with visions of retirement in my head, I purchased a 7HP Horse Rear-Tine Tiller, and had it shipped to Lawrenceberg, TN. There it rested for 1 1/2 years.

We finally sold our old home and moved south in 1989. Leaving a wooded, rocky hillside, for a level, sunny 1.9 acre piece of land, led me to soon uncrate and assemble the Horse and put it to work.

I laid out the 'beds', put the rotary plow on my venerable 6HP Gravelly and 'went to it'. NO LUCK!! The Bermuda, fescue, crab, Johnson, etc. grasses kept stalling the old standby.

So I harnessed up the NY-bred Horse, set it in low gear and gave it a try. One pass each way and I had the turf about 50% removed. Then I set the Tiller for deeper tilling, ran several passes, added dried grass cuttings, another pass, added semi-rotted leaves, another pass or two, and

I was ready to till the beds and plant.

I used Wide-Row, Raised Beds in my garden. However, between my beds I keep the grass intact. They are generous well groomed aisles.

I am fortunate to have the space to permit wide aisles, which not only add to the garden's appearance, and admit more sun and ventilation, they also make access more convenient.

I have had many compliments on the appearance of my garden.

I made succession plantings of bush and lima beans, corn, and black-eyed peas. Also had peppers, okra, tomatoes, onions, zucchini and sunflowers. We ate well, filled the freezer and gave some away.

I want to commend all of you at TROY-BILT for the way you design, build, sell, and service



your products. It's so much in contrast to today's 'grab the money and run' attitude.

When I mentioned to my brother-in-law I was thinking of buying a TROY-BILT Tiller, he responded by saying, 'you are buying the Cadillac of the tiller's'. It truly is a horse when it comes to soil preparation.

P.S. I just heard a strange whinny from the barn. I do believe the TROY-BILT Horse is developing a Southern accent.

*George Polk,
Lawrenceburg, TN*

"The TROY-BILT® Tiller gave me a second childhood!"

My spectacular garden is only one of the achievements that have been accomplished with the TROY-BILT® Tiller. It may sound corny, but the TROY-BILT® Tiller made me decide to buy the house that I have been renting for twenty years. Being raised on a farm, I have always wanted to move back into the country. Now that I have my TROY-BILT®, I have been able to completely landscape my yard and several of my neighbors' yards. My flower garden has over 70 different perennials. Since my yard has made such a dramatic change to the neighborhood, the local neighborhood priority board is assisting me in the total renovation of an 85 year old home. In a nutshell, you can see that the TROY-BILT® Tiller has made a big change in my life.

I simply want to say that I feel that the TROY-BILT is the best investment I have made in many years. It has allowed me to relive a second childhood at 40 years of age. Everyone should have such an experience!

*Robert Ulrich,
Dayton, OH*

"When my Tiller arrived it was a red letter day."

Until 18 years ago, I had never owned a tiller, never used a tiller and never seen a TROY-BILT.

I had seen pictures of the TROY-BILT in magazines and immediately ordered the biggest one at that time. So, the first time I ever saw a TROY-BILT was also the first time I ever owned or operated any kind of tiller. When that fine piece of equipment arrived at my home from Troy, New York, it was 'A RED LETTER DAY'.

I have noticed that some people refer to the TROY-BILT as 'BIG RED'. Well, I am conservative therefore, I named my BIG RED, 'TORY'! I merely flipped the 'RO' to 'OR'; ergo a TORY TROY.

Indeed, it has been conservative in all ways imaginable. Over the years, I ordered three sets of tines and one set of belts. The belts are still in the package they came in. Haven't needed them yet!

In the fall of '84 I had to replace a valve. That following April, old Tory quit right in the middle of the garden. I walked in the house, picked up the phone and called Troy. I started out by saying I would like to have an 8HP with electric start. The sales person told me all about it and I said, 'Send me one'.

I received it in spring of '85. It was just like Christmas. I couldn't wait to open it to see what I had bought: without ever having seen a picture of it. I was excited when the sales person was telling me about the 'new' machine, but even more so after seeing what I bought 'sight-unseen'. I was as pleased as punch.

Oh, I forgot about old Tory that I left in the garden when I came in and bought the 'new' one. Well, old Tory (sometimes I think those machines you turn out are living entities) must have thought I was going to retire him. One pull and that critter fired-up and hasn't quit since.

No, I won't sell old Tory. Anything that has been as faithful as he has will always have a home with me! What have I named the new machine? 'THE NEW BILT-MORE'! I have been around horses and bulls all my life and that's no 'BULL', that's a 'HORSE'!

*Billy Barr,
Bonham, TX*



True to our Heritage, today's TROY-BILT Tillers are the very finest ever.

6HP ECONO HORSE Model

7HP STANDARD
HORSE Model

8HP PROFESSIONAL
HORSE Model

5HP PONY* Model

4HP JUNIOR* Model

6 HP ECONO HORSE Model

Get full TROY-BILT Tillage power, at an economical price. Easily handles tough sod-busting, deep tilling, and power-composting typical of our larger Horse Models. Yet it's set on a somewhat smaller frame, so it costs less. Power forward/reverse, 18" tilling width, 8" depth. Gardens to 4,000 sq. ft.

5HP TROY-BILT PONY* Model

Our in-between machine is a mid-size work-horse! Big enough to till up to 2500 sq. ft., yet small enough to neatly cultivate between close-planted rows, the PONY* Model is great for close-quarter situations. 16" tilling width, 8" depth, power forward and reverse.

7 HP STANDARD HORSE Model

The classic, #1 best-selling tiller in America. Industrial Commercial engine, 4 forward/2 reverse speeds, PTO feature makes this the top choice of hundreds of thousands of TROY-BILT gardeners. 20" tilling width, 8" depth, gardens over 5,000 sq. ft.

Every TROY-BILT Tiller comes with the Industry's very finest consumer protection package...

- A 30-Day RISK FREE Trial Offer
- A Full, No-Time-Limit Warranty
- Our Timeless Promise of Satisfaction

8 HP PROFESSIONAL HORSE Model

This is it, the top-of-the-line TROY-BILT Tiller, the finest gardening machine available anywhere. Heavy duty cast iron block, PTO capability, 20" tilling width, 8" depth, for gardens to 1/4 acre or more. 4 forward/2 reverse speeds.

4HP TROY-BILT JUNIOR* Model

Here's the small-garden miracle machine! Lightweight and easy to maneuver at just 149 lbs., the TROY-BILT JUNIOR* Model is a wonderful choice for first-time gardeners, or those with smaller gardens, under 1000 sq. ft. 14" tilling width, tills to 6" depth. Power forward/reverse.

An American Legend Caring For The Land

For more than 20 years we've been manufacturing quality power equipment to help Americans build better gardens and a better homeplace. We're convinced that this commitment to helping our customers live more healthful, more active and productive lives through vegetable gardening is a critical part of our company heritage.

Today, as we enter the final decade of this century, our vision remains clear, and our dedication to these founding principles consistent. With quality power products... a profound respect for the needs of our customers... and a continuing concern for the quality of our environment, we look to the future with great hope and enthusiasm.



An American Legend Caring For The Land.™

102nd St. and 9th Ave., Troy, New York 12180
1-800-828-5500