



Parts Catalog

Sickle Bar Mower

Model

34061 – 34" 3-1/2 HP Recoil Start

Serial Numbers 340610500101 - 340611199999

34062 – 38" 4 HP Recoil Start

Serial Numbers 340620500101 - 340621199999

34063 – 42" 5 HP Recoil Start

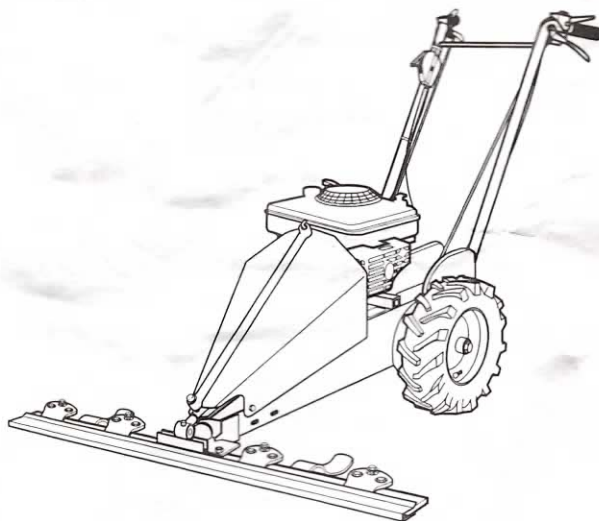
Serial Numbers 340630500101 - 340631199999

34064 – 42" 5 HP Electric Start

Serial Numbers 340640500101 - 340641199999

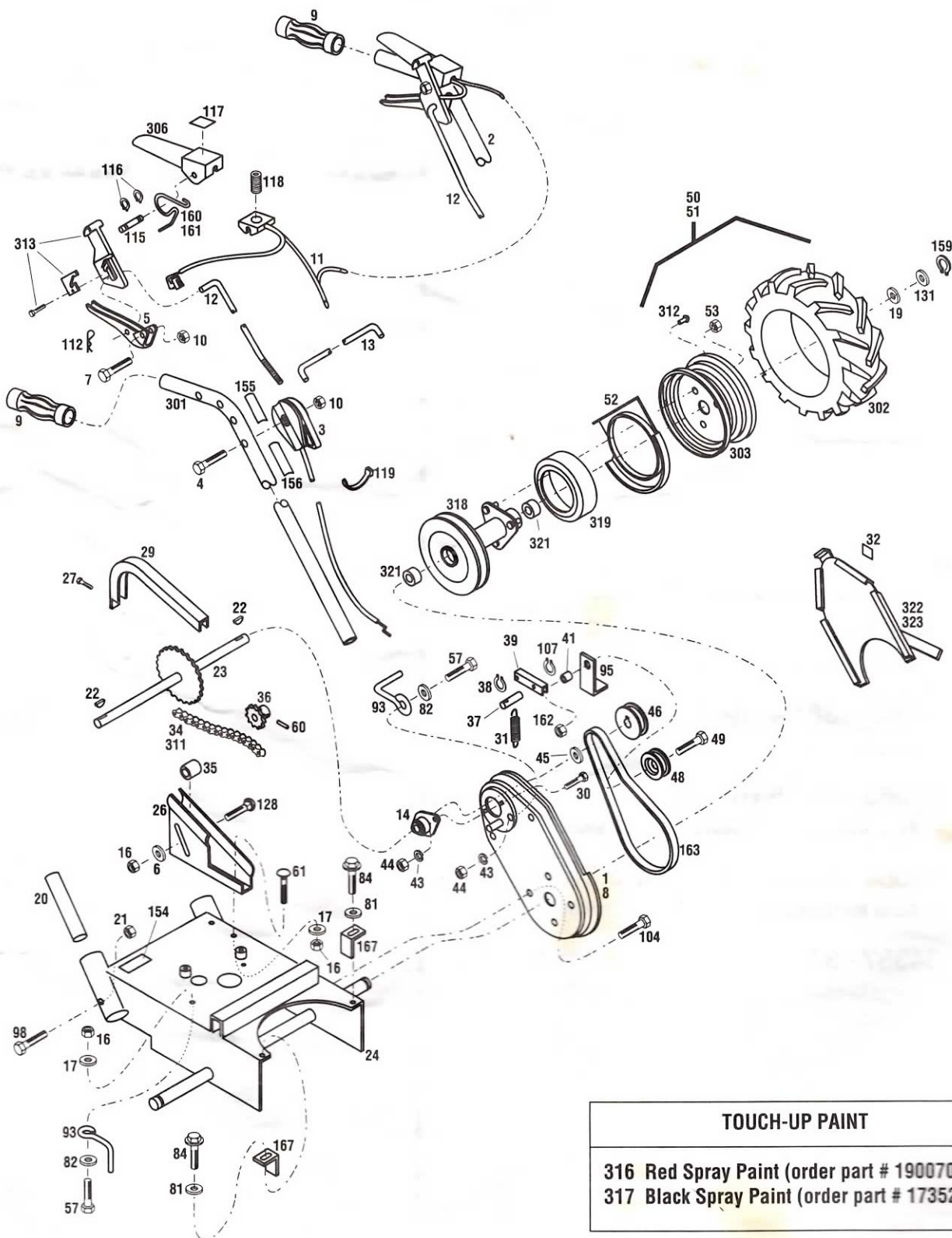
34337 – 34" 4 HP Electric Start

Serial Numbers 343371100101 - 343371199999



TROY-BILT® Sickle Bar Mower

S/N 340610500101-340611199999
 S/N 340620500101-340621199999
 S/N 340630500101-340631199999
 S/N 340640500101-340641199999
 S/N 343371100101-343371199999



TOUCH-UP PAINT

316 Red Spray Paint (order part # 1900706)
 317 Black Spray Paint (order part # 1735222)

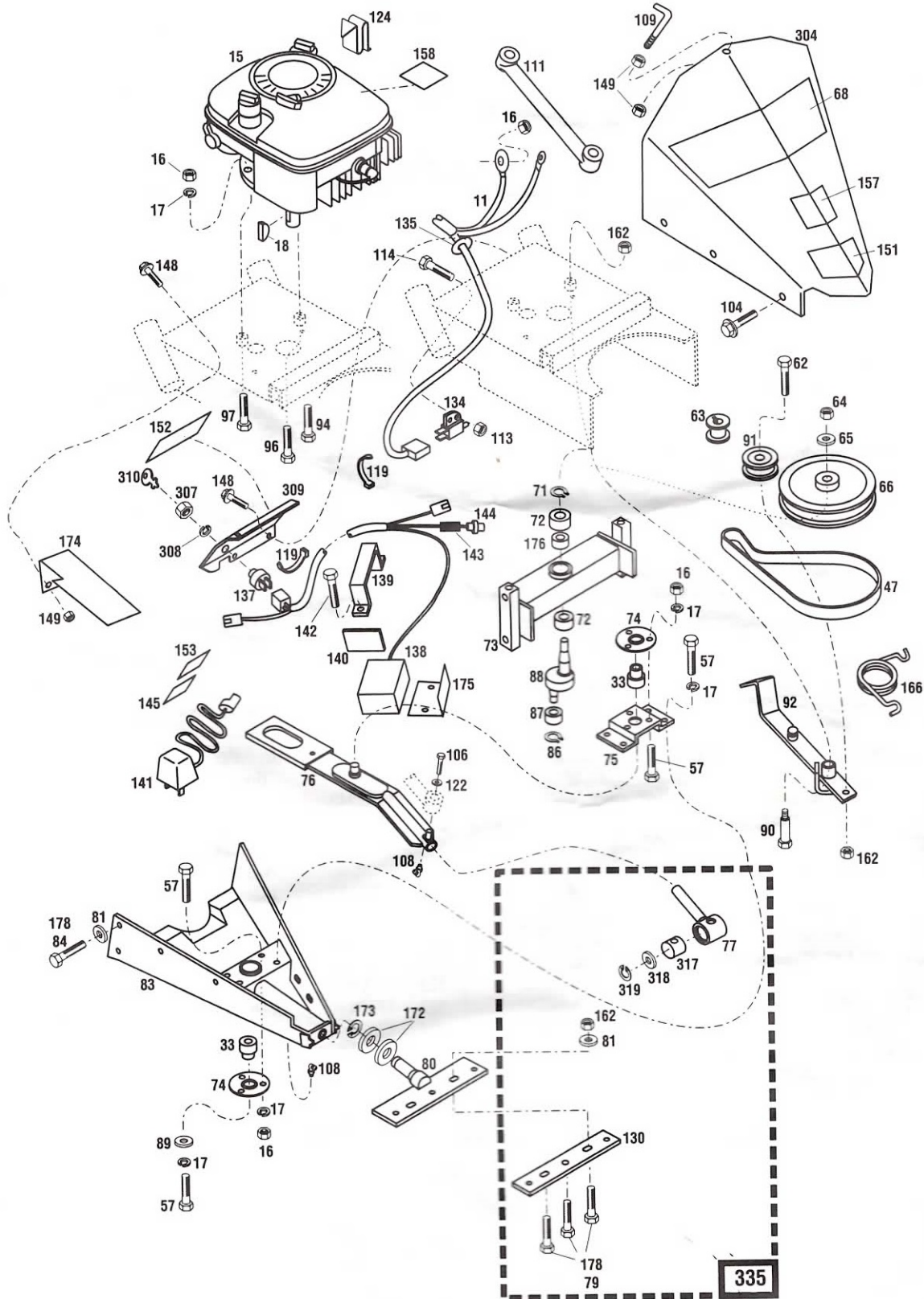
Ref #	Part #	Description	Qty.	Ref #	Part #	Description	Qty.
1	1767711010	Left Wheel Drive Housing	1	57	1100044	Hex Head Capscrew, 5/16-18 x 3/4.....	3
2	1765981001	Left Handlebar	1	60	1120210	Roll Pin, 3/16 x 1	1
3	1767717	Throttle	1	61	1186469	Carriage Bolt, 5/16-18 x 3/4.....	2
4	1100807	Hex Head Capscrew, 1/4-20 x 2.....	1	81	1773272	Flat Washer (hardened), 5/16	2
5	1766603	Wheel Clutch Lever.....	2	82	1100255	Flat Washer, 5/16.....	5
6	1107382	Flat Washer, 5/16.....	1	84	1773423	Hex Head Capscrew, 3/8-16 x 3/4, Grade 8 .	2
7	1100811	Hex Head Capscrew, 1/4-20 x 1-1/2	2	93	1768516	Belt Guide	3
8	1767712010	Right Wheel Drive Housing.....	1	95	1764121001	Belt Guide	2
9	9126	Handle Grip	2	98	1111607	Hex Head Capscrew,	
10	1110106	Center Locknut, 1/4-20	3			5/16-18 x 2-1/4, Grade 5	2
11	1768430	Operator Interlock Harness		104	1740496	Self-Tapping Screw, 5/16-18 x 5/8	6
		(Incl. Refs. 313 & 325. Also Ref. 134 from		107	1185219	Retaining Ring, 1/2.....	2
		pg. 5)	1	112	1717897	Hair Pin	2
12	1768426	Wheel Clutch Rod	2	115	1765993	Pivot Pin, 1/4	2
13	1766608	Handlebar Bridge	1	116	1766992	Crescent Ring	4
14	1767552	Flange Bearing	2	117	1765925	Decal, Operator Presence Control	2
16	1186230	Hex Nut, 5/16-18	4	118	1765923	Compression Spring	2
17	1110645	Lockwasher, 5/16	4	119	1735531	Cable Tie	6
19	1107387	Flat Washer, 3/4.....	2	128	1186102	Carriage Bolt, 5/16-18 x 1-1/4	1
20	1766611	Shock Absorber	2	131	1701447	Shim Washer	2
21	1732499	Top Locknut, 5/16-18	2	154	1767091	Decal, Oil Drain	1
22	1104436	Woodruff Key, #9, 3/16 x 3/4.....	3	155	1767645	Decal, Throttle (A) (B) (E)	1
23	1767545	Counter Shaft.....	1		1767111	Decal, Throttle (C) (D).....	1
24	1773216010	Engine Deck.....	1	156	1767124	Decal, Place Hand	1
26	1766890010	Chain Idler Bracket.....	1	159	1185388	Retaining Ring	2
27	1186009	Hex Head Screw, #10-24 x 1/2	1	160	1767128	Left Control Return Spring.....	1
29	1766622010	Chain Cover	1	161	1767129	Right Control Return Spring	1
30	1766623	Carriage Bolt, 1/4-20 x 1/2.....	4	162	1110108	Center Locknut, 3/8	2
31	1766624	Wheel Clutch Spring	2	163	1766808	V-Belt.....	2
32	1769517	Decal, Top.....	2	167	1773460	Belt Guide	2
34	1766627	Chain (Incl. Ref. 311).....	1	301	1767159	Right Handlebar Assembly	
35	1766628	Chain Idler	1			(Incl. Refs. 155 & 156)	1
36	1766629	Sprocket, 12T	1	302	1767718	Tire, 13 x 5 x 6 Traction Lug	2
37	1766630	Idler Arm Pivot.....	2	303	1770455	Wheel Rim Assembly.....	2
38	1185257	Snap Ring, 3/8, "E" Type	2	306	1767160	Operator Presence Control Lever Assembly	
39	1766631	Wheel Clutch Idler Arm.....	2			(Incl. Ref. 117)	2
41	1766714	Wheel Idler Spacer.....	2	311	1730343	Chain Connector Link.....	2
43	1100241	Lockwasher, 1/4	4	312	1718086	Valve Stem.....	2
44	1186229	Hex Nut, 1/4-20	4	313	1768429	Thumb Latch Assembly	2
45	1769982	Spacer.....	2	316	1900706	Red Spray Paint (13 oz. can)	N/I
46	1766636	Counter Shaft Pulley	2	317	1735222	Black Spray Paint (13 oz. can)	N/I
48	1710566	Idler Pulley.....	2	318	1770460	Drive Hub/Pulley	2
49	1100049	Hex Head Capscrew, 3/8-16 x 2-1/4	2	319	1770465	Spacer Tube.....	2
50	1770480	Left Wheel Assembly		321	1766810	Bearing	4
		(Incl. Refs. 302, 303 & 312)	1	322	1770490	Right Belt Cover Assembly (Incl. Ref. 32)....	1
51	1770470	Right Wheel Assembly		323	1770495	Left Belt Cover Assembly (Incl. Ref. 32)	1
		(Incl. Refs. 302, 303 & 312)	1	324	1767112	Service Kit (Incl. Ref. 163, Air Filter	
52	1769972010	Belt Seal.....	2			Elements, Spark Plug, Instructions).....	N/I
53	1764070	Top Locknut, 3/8-24	6	325	1767256	Cable Tie	3

(A) Model 34061 (B) Model 34062 (C) Model 34063 (D) Model 34064 (E) Model 34337

N/I - Not included with unit, order separately.

TROY-BILT® Sickle Bar Mower

S/N 340610500101-340611199999
 S/N 340620500101-340621199999
 S/N 340630500101-340631199999
 S/N 340640500101-340641199999
 S/N 343371100101-343371199999



Ref #	Part #	Description	Qty.	Ref #	Part #	Description	Qty.
11	1768430	Operator Interlock Harness (Incl. Ref. 134. Also Refs. 313 & 325 from pg. 3).....	1	108	1767609	Grease Fitting, 1/4-28 x 90°.....	2
15	*	Engine, Briggs & Stratton, 3.5 HP (A).....	1	109	1766704	Upper Hook, 1/4-20.....	1
	*	Engine, Briggs & Stratton, 4 HP (B) (E).....	1	111	1766805	Bungi Strap, 14-1/2".....	1
	*	Engine, Briggs & Stratton, 5 HP (C).....	1	113	1185985	Hex Nut, #10-24.....	2
	*	Engine, Briggs & Stratton, 5 HP w/elec. start (D).....	1	114	1758070	Truss Hd. Screw, #10-24 x 5/8.....	2
16	1186230	Hex Nut, 5/16-18.....	10	119	1735531	Cable Tie.....	3
17	1110645	Lockwasher, 5/16.....	15	122	1100254	Flat Washer, 1/4.....	1
18	1100275	Woodruff Key, #6, 5/23 x 5/8.....	1	124	1766558	Engine Cable Clip.....	1
33	1766626	Bearing Insert.....	2	130	1767687001	Doubler Bracket.....	1
47	1767142	V-Belt.....	1	134	1751340	Switch.....	1
57	1100044	Hex Head Capscrew, 5/16-18 x 3/4.....	11	135	1766947	Grommet.....	2
62	1100047	Hex Head Capscrew, 3/8-16 x -1/2.....	1	137	1900455	Key Switch (D).....	1
63	1766650	Engine Pulley.....	1	138	1909647	Battery (D).....	1
64	1186216	Hex Nut, 5/8-18.....	1	139	1772392	Battery Clamp (D).....	1
65	1107386	Flat Washer, 5/8.....	1	140	1756549	Battery Pad (D).....	1
66	1766651	Eccentric Pulley.....	1	141	1768449	Charger (D).....	1
68	1766926	Decal, Troy-Bilt.....	1	142	1763875	Thread Forming Screw, 1/4-20 x 3/8 (D).....	2
71	1185102	Retaining Ring.....	1	143	1772168	2-amp Fuse.....	1
72	1766657	Ball Bearing.....	2	144	1772130	Start Harness (D).....	1
73	1773137001	Housing Assembly.....	1	145	1766959	Decal, Electric Start (D).....	1
74	1766664	Bearing Retainer.....	2	148	1724492	Self-Tapping Fl. Screw, 1/4-20 x 1/2.....	3
75	1766665	Upper Pivot Bearing Support.....	1	149	1186389	Flange Lock Nut, 1/4-20.....	3
76	1773565	Eccentric Arm Assembly.....	1	151	1739687	Decal, OPEI Danger.....	1
77	1773537	Pitman Assembly (Incl. Refs. 317, 318 & 319).....	1	152	1767077	Decal, Warning.....	1
79	1773452	Hex Hd. Capscrew, 3/8-16 x 1-1/4, Grade 8.....	3	153	1901899	Decal, American Legend.....	1
80	1772711001	Attachment Mounting Bracket Assembly.....	1	157	1767141	Decal, Danger.....	1
81	1773272	Flat Washer (hardened), 5/16.....	2	158	1983202	Decal, Hot Surface.....	1
83	1773218010	Front Housing Assembly.....	1	162	1110108	Center Lock Nut, 3/8.....	5
84	1773423	Hex Head Capscrew, 3/8-16 x 3/4, Grade 8.....	6	166	1705792	Torsion Spring.....	1
86	1118809	Retaining Ring.....	1	172	1773451	Flat Washer.....	2
87	1766795	Eccentric Bearing.....	1	173	1118813	Retaining Ring.....	1
88	1766895	Eccentric Shaft.....	1	174	1773528001	Switch Cover.....	1
89	1729245	Flat Washer, 5/16.....	1	175	1773529	Heat Reflector (D).....	1
90	1736221	Shoulder Screw.....	1	176	1773530	Spacer.....	1
91	1713803	Idler Pulley, 3 x 1.....	1	178	1757032	Loctite® Thread Compound.....	1
92	1767715001	Knife Clutch Arm.....	1	304	1767156	Fender (Incl. Refs. 151 & 157).....	1
94	1111610	Hex Head Capscrew, 5/16-18 x 3.....	1	307	92018	Nut (D).....	1
96	1111613	Hex Head Capscrew, 5/16-18 x 4, Grade 5.....	1	308	1187950	Lock Washer (D).....	1
97	1111611	Hex Head Capscrew, 5/16-18 x 3-1/2.....	1	309	1767155	Keyswitch Plate (Incl. Ref. 152).....	1
104	1740496	Self-Tapping Screw, 5/16-18 x 5/8.....	6	310	96520	Key (D).....	1
106	1100806	Hex Head Capscrew, 1/4-20 x 1-1/4.....	1	317	1772940	Pitman Bearing.....	1
				318	1715301	Thrust Washer.....	1
				319	1767593	Retaining Ring.....	1
				335	---	See pages 6 & 7	

(A) Model 34061 (B) Model 34062 (C) Model 34063 (D) Model 34064 (E) Model 34337

* Purchase engine parts from your local Briggs & Stratton Dealer. Refer to engine for type and code.

A/R - As Required

TROY-BILT® Sickle Bar Mower

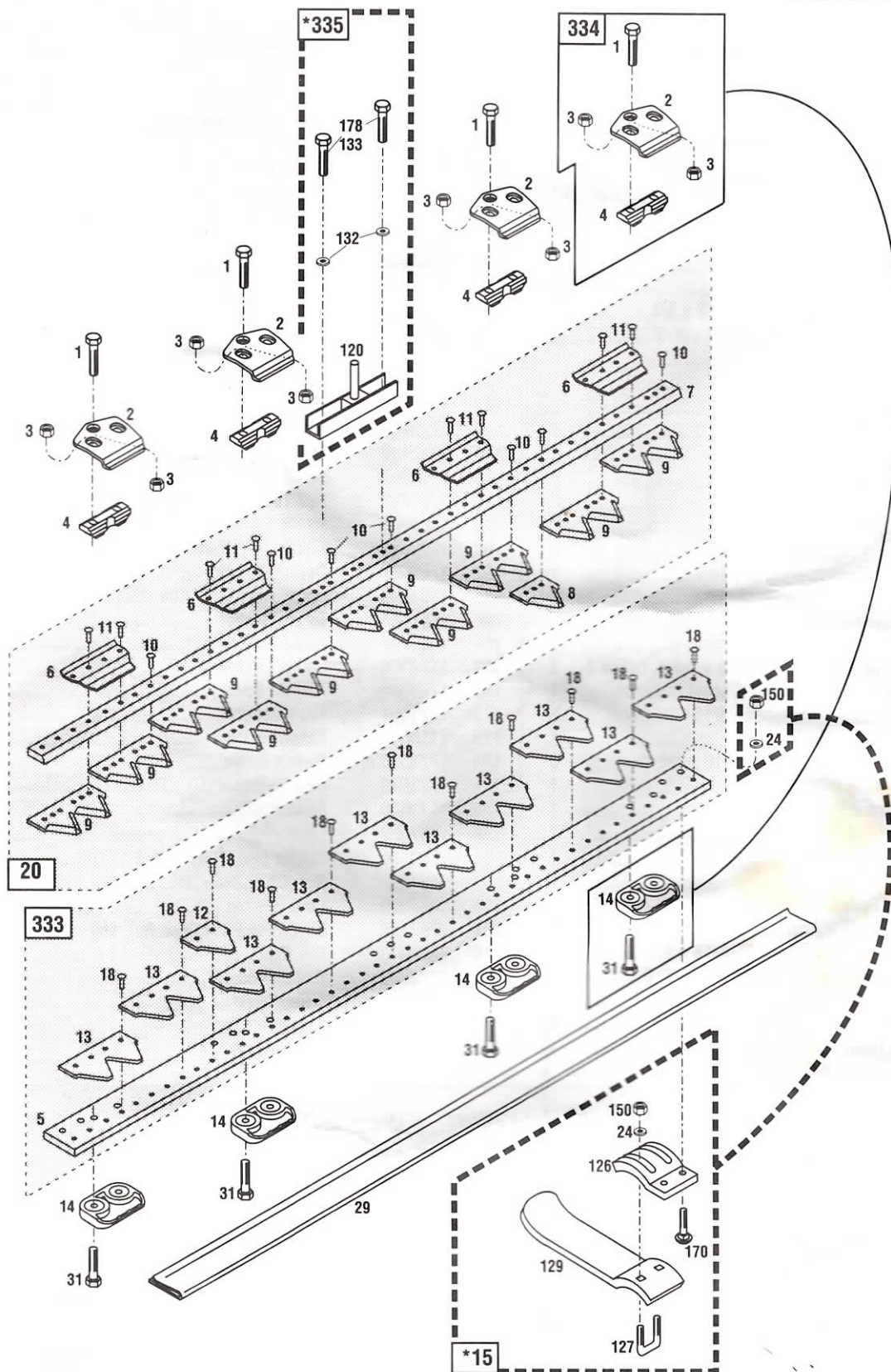
S/N 340610500101-340611199999

S/N 340620500101-340621199999

S/N 340630500101-340631199999

S/N 340640500101-340641199999

S/N 343371100101-343371199999



*** Items not Included in Cutter Bar Assemblies 1765990, 1766743 & 1766744**

Cutter Bar Assembly

34"-1765990

38"-1766743

42"-1766744

MODELS 34061, 34062, 34063, 34064 & 34337

Ref #	Part #	Description	Qty.
1	1860218	Hex Head Screw, M8 x 0.30.....	4
2	1766746	Hold-Down Clip	4
3	1766747	Lock Nut, M8.....	12
4	1766748	Knife Guide	4
5	1765991	34" Ledger Plate Bar	1
	1766753	38" Ledger Plate Bar	1
	1766754	42" Ledger Plate Bar	1
6	1766755	Wear Plate	4
7	1766929	34" Blade Knife Bar	1
	1766756	38" Blade Knife Bar	1
	1766757	42" Blade Knife Bar	1
8	1766758	Blade (single).....	1
9	1767069	Blade (double) 34".....	8
	1767069	Blade (double) 38".....	9
	1767069	Blade (double) 42".....	10
10	1768294	Rivet Section, 5 x 17 (pack of 12).....	A/R
11	1768295	Rivet Section, 5 x 20 (pack of 12).....	A/R
12	1766764	Ledger Plate (single).....	A/R
13	1766765	Ledger Plate (double).....	A/R
14	1766767	Runner.....	4
15	1766769	Skid Assembly (Incl. Refs. 16, 23, 24, 127, 150 & 170)	2
18	1768296	Ledger Rivet, 6 x 20 (pack of 12)	A/R
20	1765992	34" Blade Assembly (Incl. Refs. 6, 7, 8, 9, 10 & 11)	1
	1766762	38" Blade Assembly (Incl. Refs. 6, 7, 8, 9, 10 & 11)	1
	1766763	42" Blade Assembly (Incl. Refs. 6, 7, 8, 9, 10 & 11)	1
24	1107382	Flat Washer, 5/16.....	4

Ref #	Part #	Description	Qty.
29	1766777	Blade Guard, 34".....	1
	1766934	Blade Guard, 38".....	1
	1766935	Blade Guard, 42".....	1
31	1766768	Hex Head Screw, M8 x 45.....	8
120	1773057	Knife Head	1
126	1766770001	Shoe Holder	2
127	1767071	U-Bolt, 5/16	2
129	1766773001	Shoe	2
132	1773271	Flat Washer (hardened), 5/16	2
133	1773424	Hex Head Capscrew, M8 x 12	2
150	1983038	Nylock Nut, 5/16-18.....	8
170	1186100	Carriage Bolt, 5/16-18 x 1, Grade 5	4
178	1757032	Loctite® Thread Compound	A/R
332	1766766	Blade Maintenance Kit (Incl. Ref. # 8 [qty. 1], 9 [qty. 4], 10 [qty. 12], 11 [qty. 6], 132 [qty. 2] & 133 [qty. 2]).....	N/I
333	1770597	34" Ledger Plate Assembly	1
	1770598	38" Ledger Plate Assembly	1
	1770599	42" Ledger Plate Assembly	1
334	1766792	Hold-Down Clip Kit (Incl. Refs. # 1 [qty. 1], 2 [qty. 1], 3 [qty. 3], 4 [qty. 1], 14 [qty. 1] & 31 [qty. 2]).....	4
335	1773564	Knife Head & Pitman Kit (Incl. Refs. 77, 79, 81, 130, 162 & 178 from pg. 5, and Refs. 120, 132 and 133 listed above)	N/I

N/I Not included with unit, order separately.

A/R - As Required.

Parts Ordering Information

If you need service or parts:

For service assistance or parts, contact your local authorized dealer or the factory.

Your local dealer or the factory service department will need to know the identification numbers of your unit to provide the most efficient service. See below for information on how to identify and record the identification numbers for your unit.

If you need engine service or parts:

For engine service or parts, contact your local authorized engine dealer. Look in the yellow pages of the phone book under "Engines-Gasoline" for the name of your nearest authorized engine dealer. An authorized engine dealer can handle all parts, repairs, and warranty service concerning the engine.

Note:

All genuine replacement parts must conform to our rigid quality specifications. Although some replacement parts we provide may vary slightly in shape, color or texture from the original parts, any variations will not affect the fit or performance of these parts on your unit.

When ordering parts for your unit, provide the following:

1. Serial number and model number of the unit.
2. Part number of part needed.
3. Part description.
4. Quantity needed.



WARNING

WE URGE USING ONLY GENUINE REPLACEMENT PARTS, WHICH MEET ALL THE LATEST REQUIREMENTS. REPLACEMENT PARTS MANUFACTURED BY OTHERS COULD PRESENT SAFETY HAZARDS, EVEN THOUGH THEY MAY FIT ON THIS UNIT!

IMPORTANT:

Left and right sides of the unit are determined by standing behind the unit, in the operator's position, and facing the direction of forward travel.

NOTICE:

We reserve the right to change specifications, add improvements or discontinue the manufacture of any of our equipment without notice or obligation to purchasers of our equipment.

Identification Numbers

Record the model and serial numbers.

When ordering any parts from us or the local servicing dealer, provide the information on the model/serial number decal. For your convenience and ready reference, record this information in the spaces provided below.

Model Number: _____

Serial Number: _____

Date of Delivery: _____

For customer assistance, contact your nearest authorized dealer or:

GARDEN WAY INCORPORATED • 1 Garden Way • Troy, New York U.S.A. 12180

Customer Service: 1-800-437-8686 • Technical Service: 1-800-520-5520 • Parts Service: 1-800-648-6776 • FAX: (518) 391-7332,

Outside the U.S.A. and Canada:

Customer Service: (518) 391-7007 • For Technical Service: (518) 391-7008 • Parts Service: (518) 391-7006 or FAX: (518) 391-7332